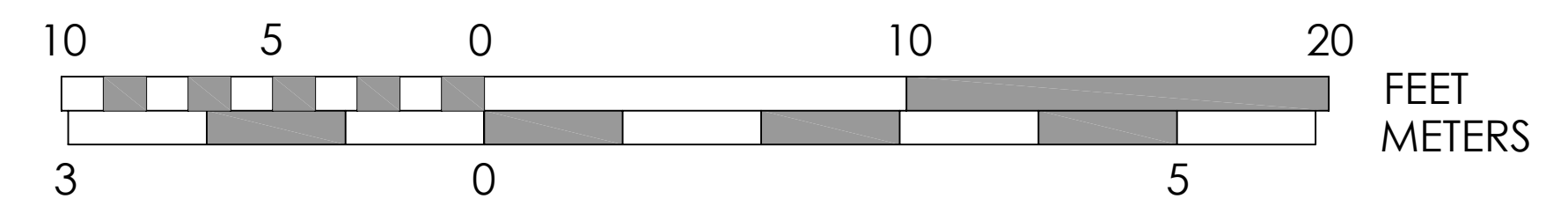


UNIT KEY PLAN



201

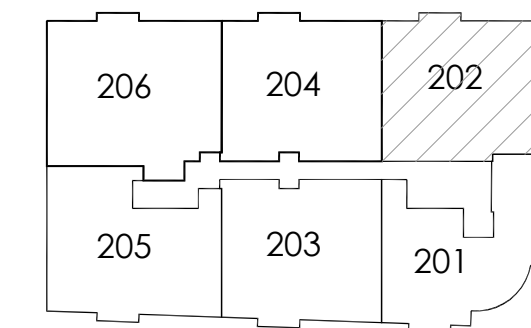
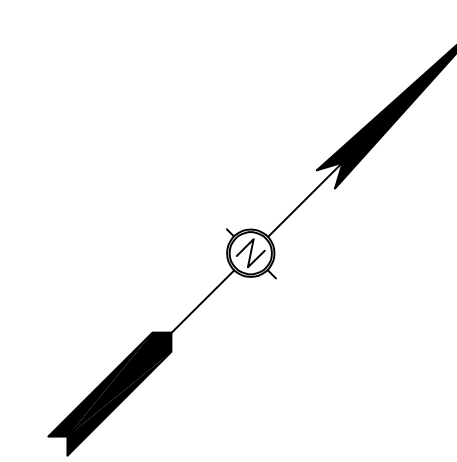
JANUARY 13, 2025  
© CJ ARCHITECTS LLC

UNIT PLAN

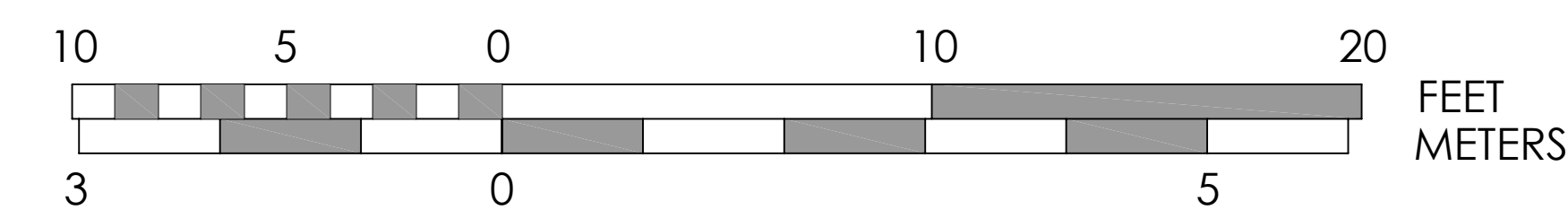
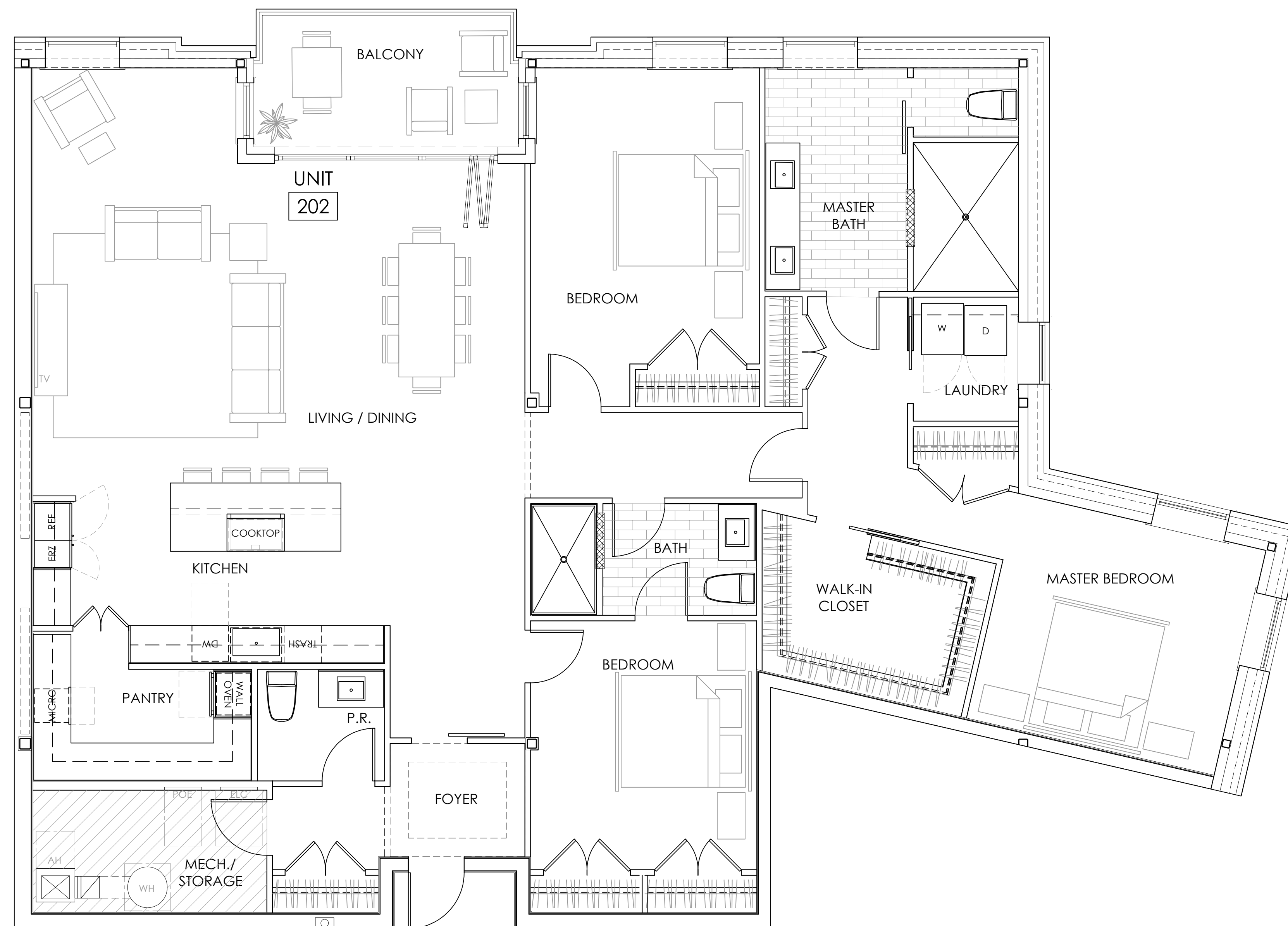
70 MAPLEWOOD AVENUE  
PORTSMOUTH, NEW HAMPSHIRE



NOTE: DIMENSIONS AND AREAS PROVIDED ARE PRELIMINARY AND ARE SUBJECT TO CHANGE DURING DESIGN DEVELOPMENT AND CONSTRUCTION. AS-BUILT CONDITIONS HAVE NOT BEEN VERIFIED.



UNIT KEY PLAN



202

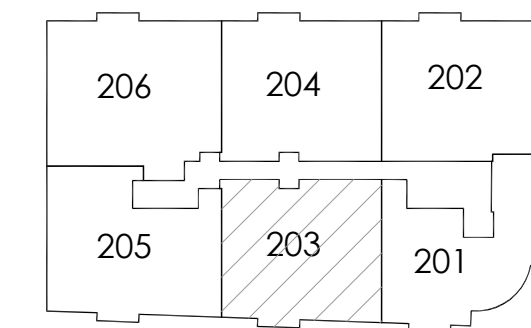
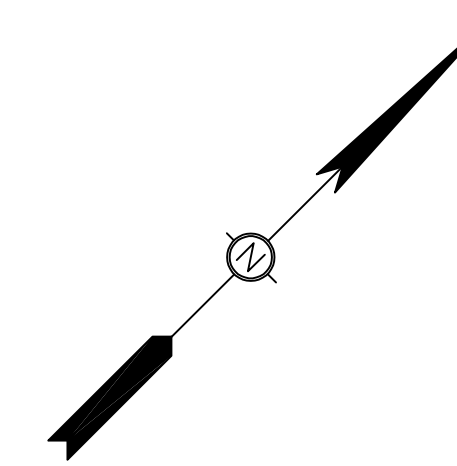
JANUARY 13, 2025  
© CJ ARCHITECTS LLC

### UNIT PLAN

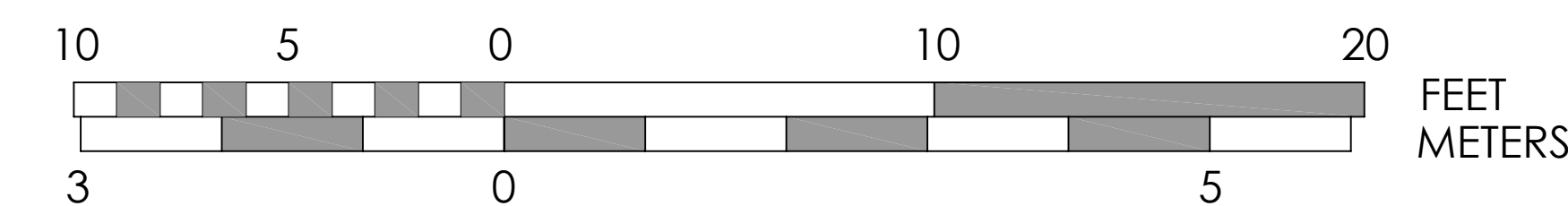
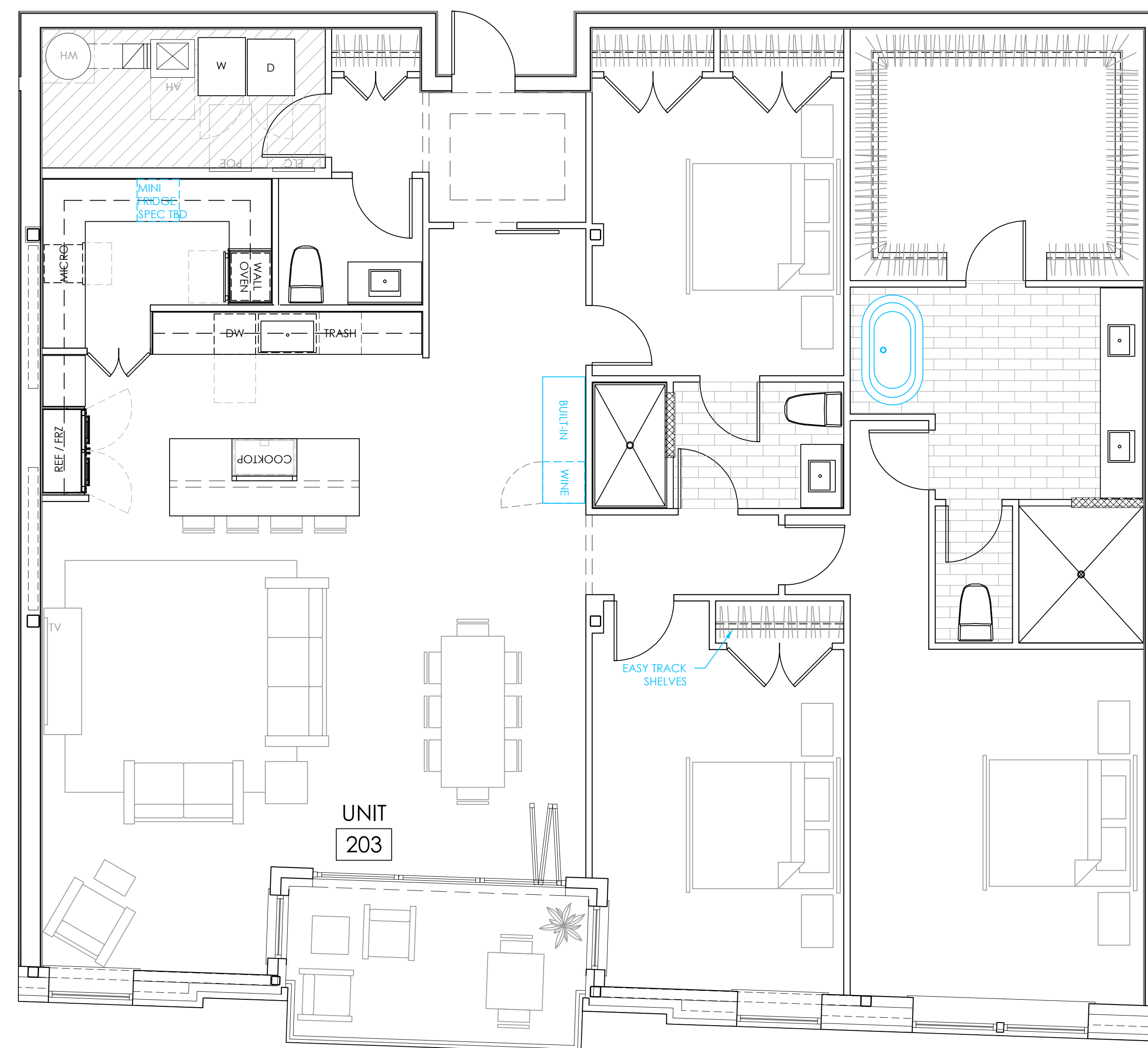
70 MAPLEWOOD AVENUE  
PORTSMOUTH, NEW HAMPSHIRE



NOTE: DIMENSIONS AND AREAS PROVIDED ARE PRELIMINARY AND ARE SUBJECT TO CHANGE DURING DESIGN DEVELOPMENT AND CONSTRUCTION. AS-BUILT CONDITIONS HAVE NOT BEEN VERIFIED.



UNIT KEY PLAN



203

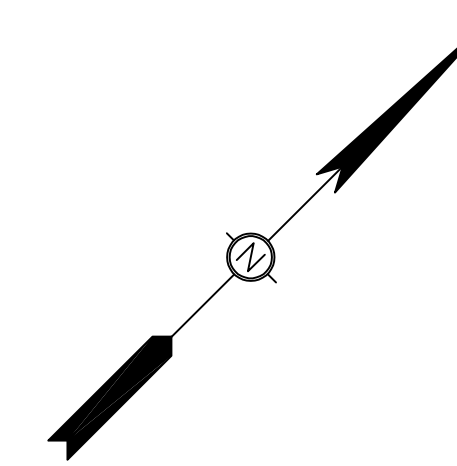
JANUARY 13, 2025  
© CJ ARCHITECTS LLC

### UNIT PLAN

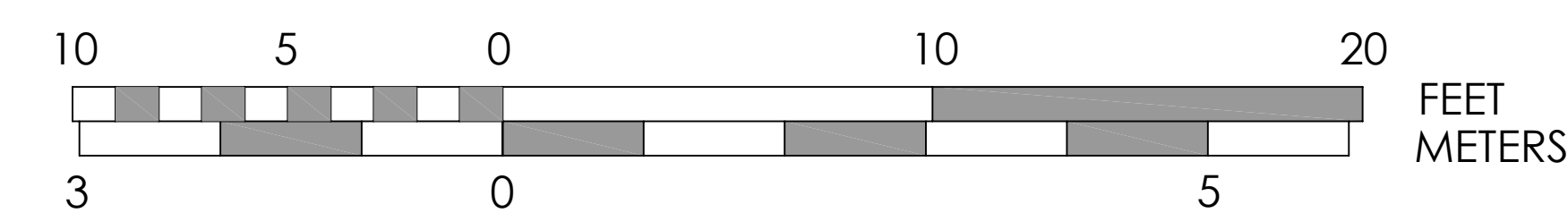
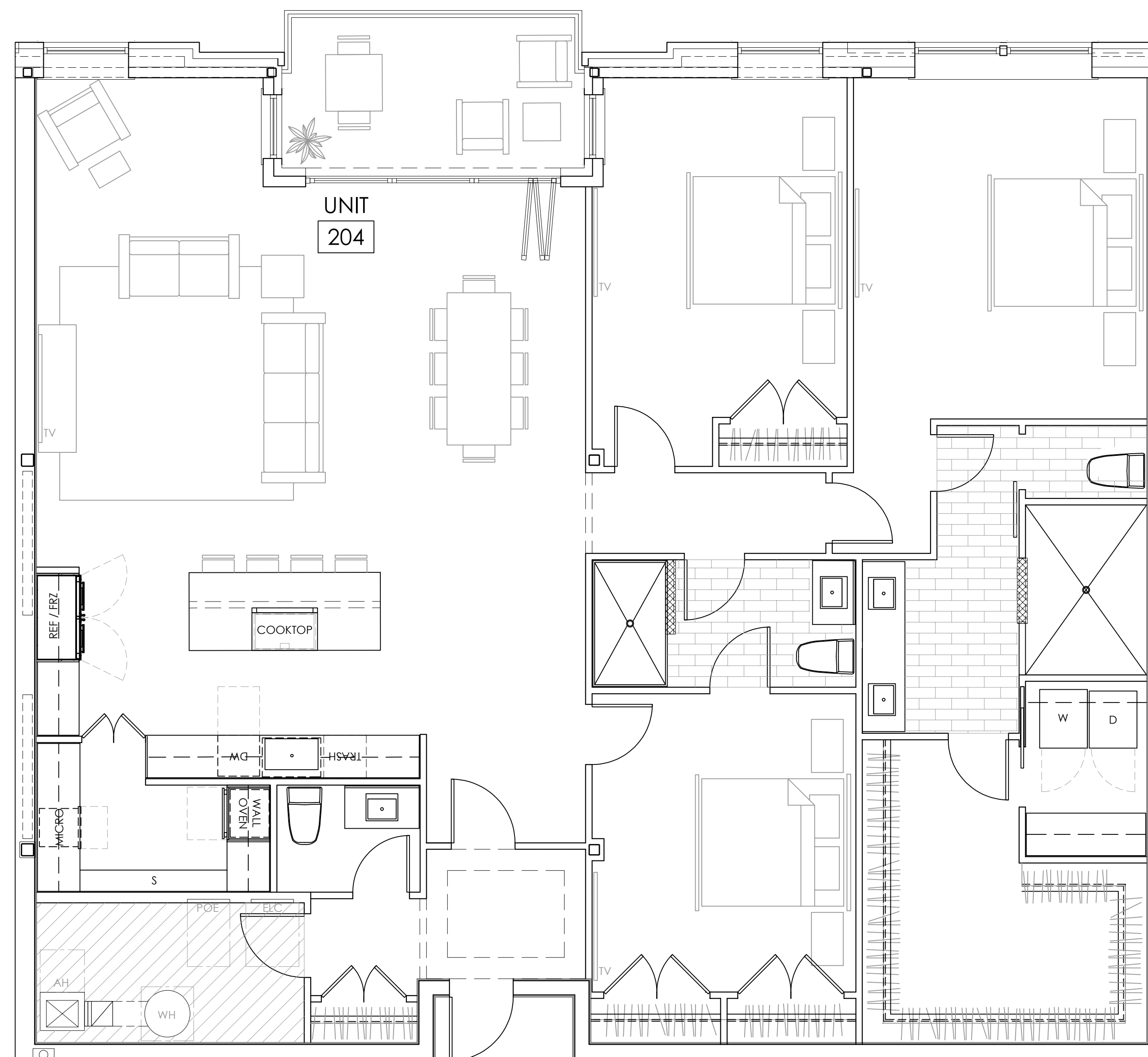
70 MAPLEWOOD AVENUE  
PORTSMOUTH, NEW HAMPSHIRE



NOTE: DIMENSIONS AND AREAS PROVIDED ARE PRELIMINARY AND ARE SUBJECT TO CHANGE DURING DESIGN DEVELOPMENT AND CONSTRUCTION. AS-BUILT CONDITIONS HAVE NOT BEEN VERIFIED.



UNIT KEY PLAN



204

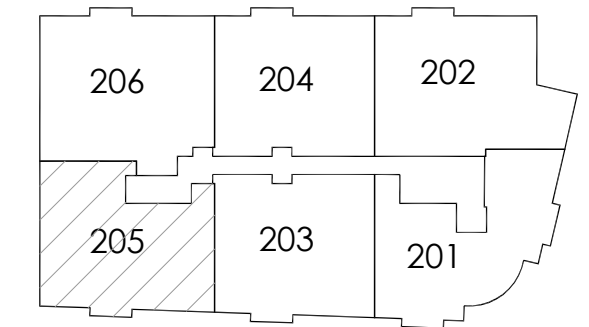
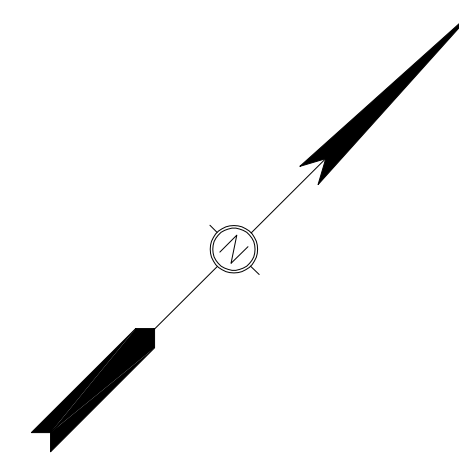
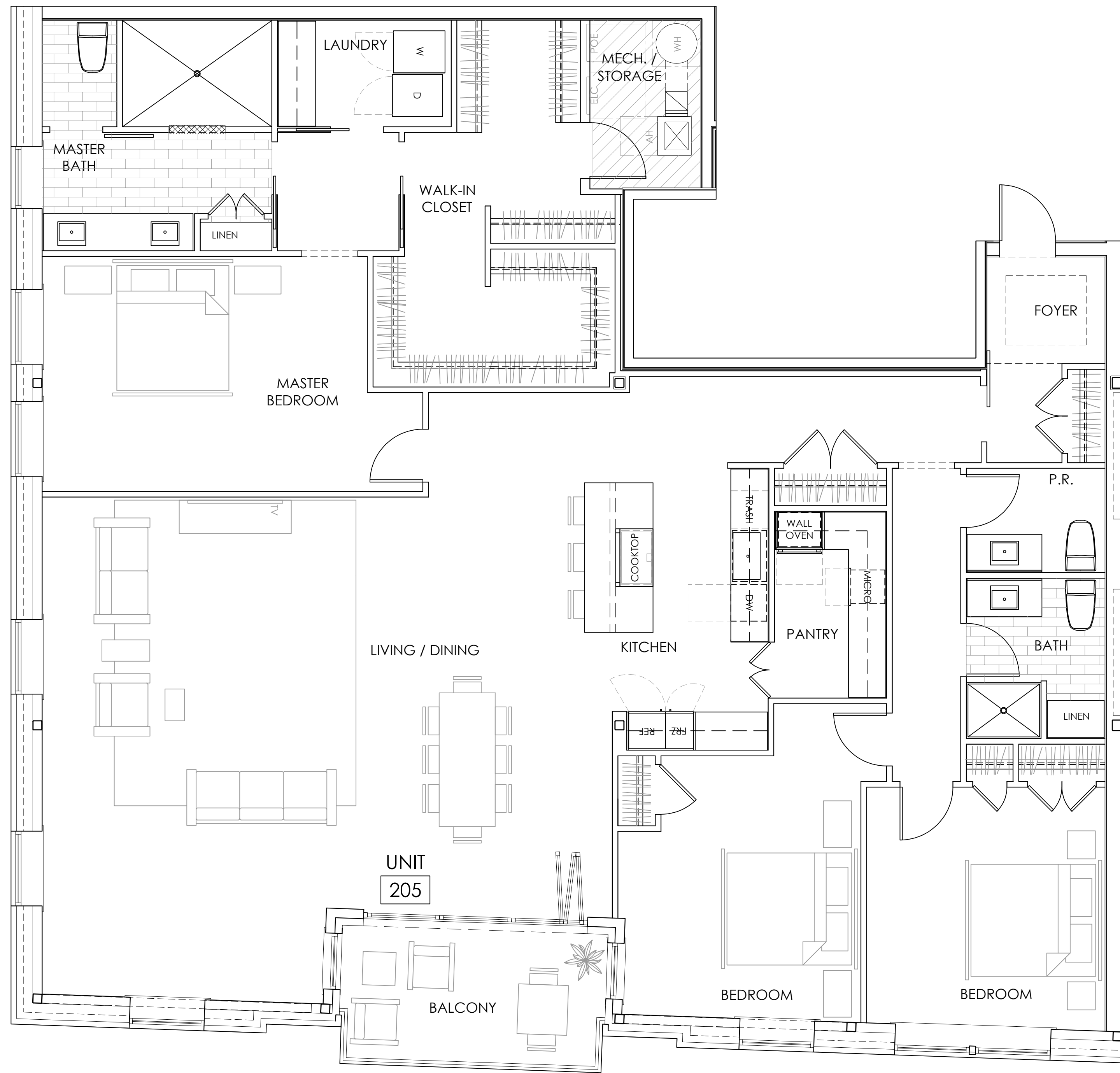
JANUARY 13, 2025  
© CJ ARCHITECTS LLC

### UNIT PLAN

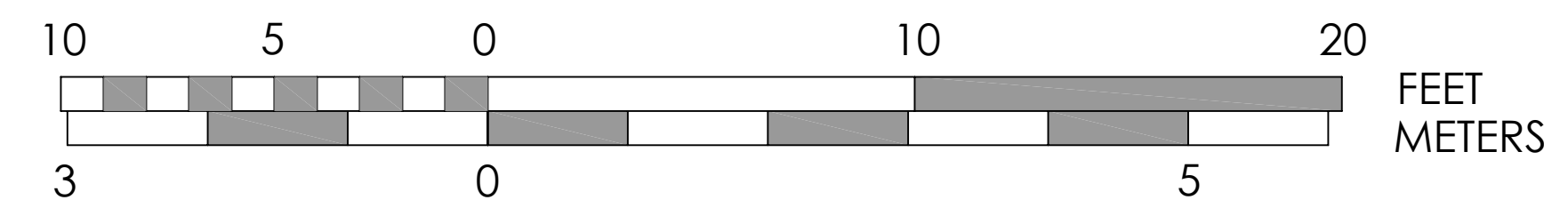
70 MAPLEWOOD AVENUE  
PORTSMOUTH, NEW HAMPSHIRE



NOTE: DIMENSIONS AND AREAS PROVIDED ARE PRELIMINARY AND ARE SUBJECT TO CHANGE DURING DESIGN DEVELOPMENT AND CONSTRUCTION. AS-BUILT CONDITIONS HAVE NOT BEEN VERIFIED.



UNIT KEY PLAN



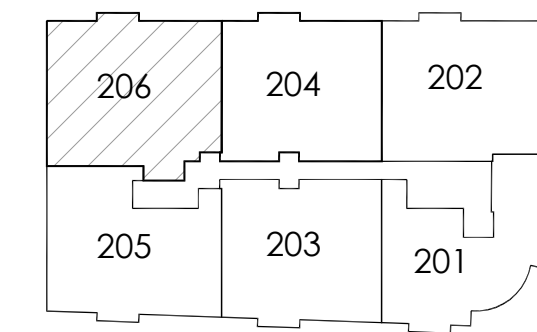
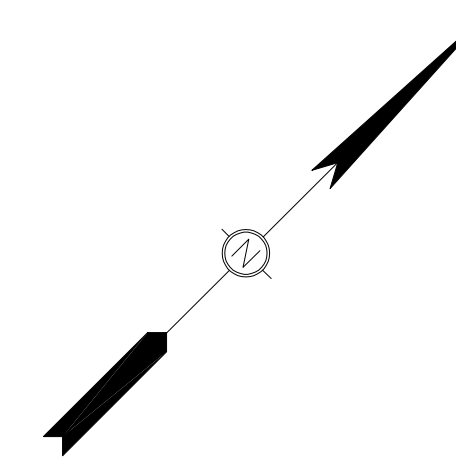
**205** JANUARY 13, 2025  
© CJ ARCHITECTS LLC

UNIT PLAN

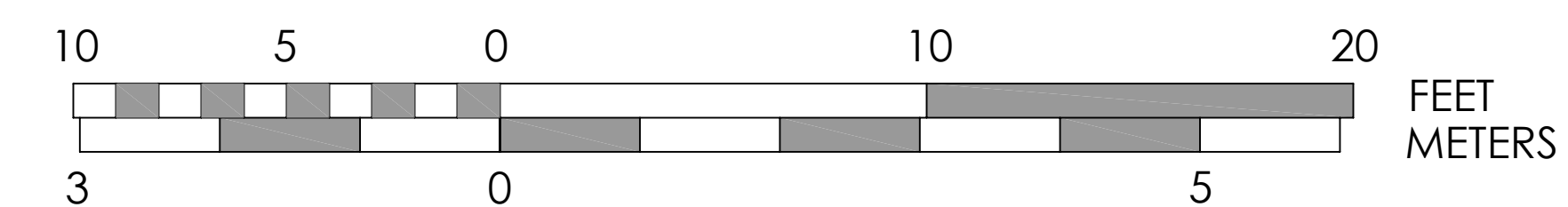
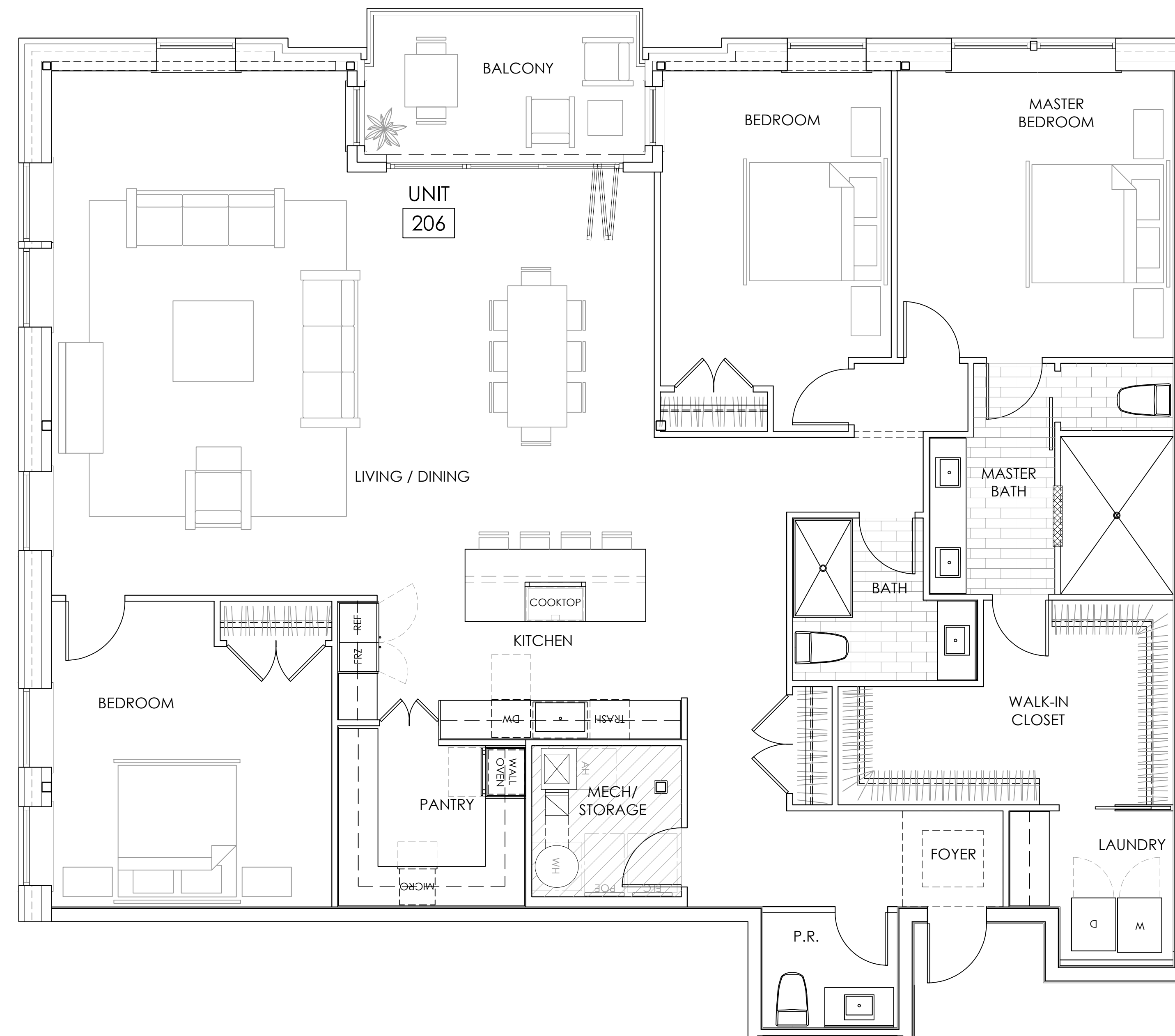
70 MAPLEWOOD AVENUE  
PORTSMOUTH, NEW HAMPSHIRE



NOTE: DIMENSIONS AND AREAS PROVIDED ARE PRELIMINARY AND ARE SUBJECT TO CHANGE DURING DESIGN DEVELOPMENT AND CONSTRUCTION. AS-BUILT CONDITIONS HAVE NOT BEEN VERIFIED.



UNIT KEY PLAN



206

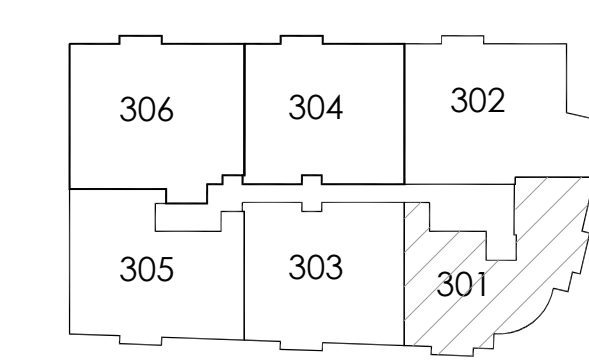
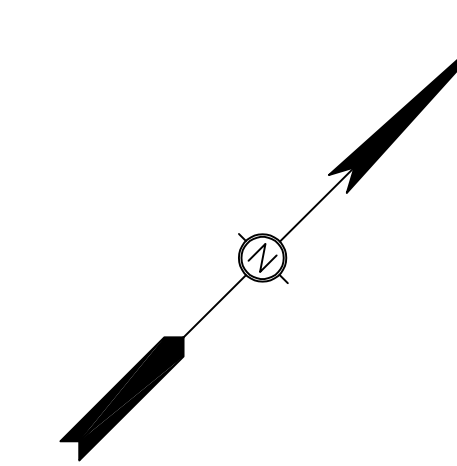
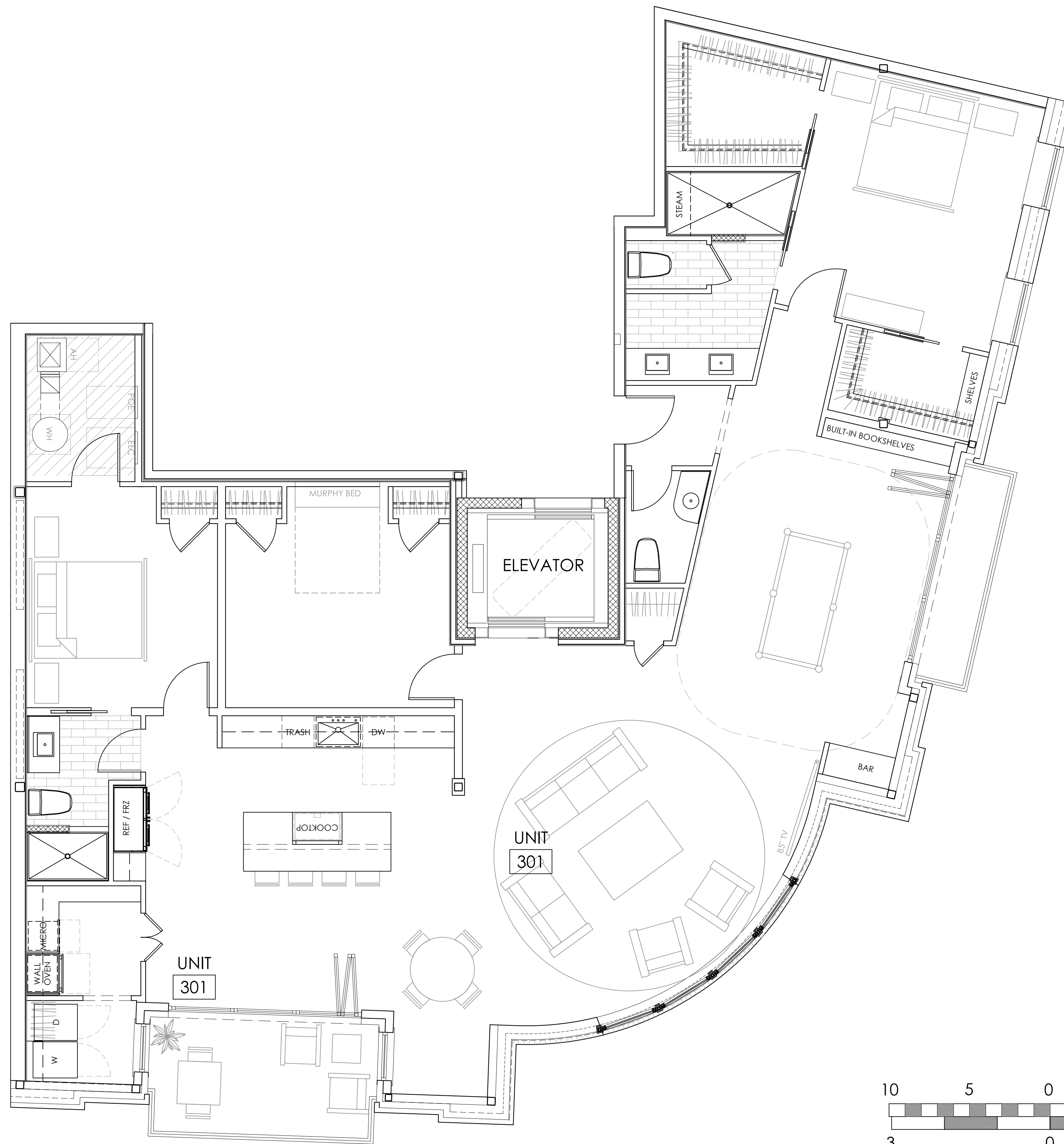
JANUARY 13, 2025  
© CJ ARCHITECTS LLC

UNIT PLAN

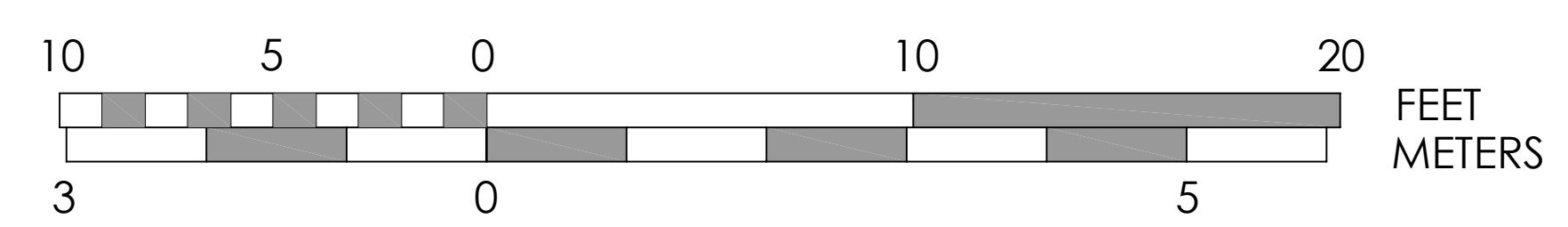
70 MAPLEWOOD AVENUE  
PORTSMOUTH, NEW HAMPSHIRE



NOTE: DIMENSIONS AND AREAS PROVIDED ARE PRELIMINARY AND ARE SUBJECT TO CHANGE DURING DESIGN DEVELOPMENT AND CONSTRUCTION. AS-BUILT CONDITIONS HAVE NOT BEEN VERIFIED.



UNIT KEY PLAN



301

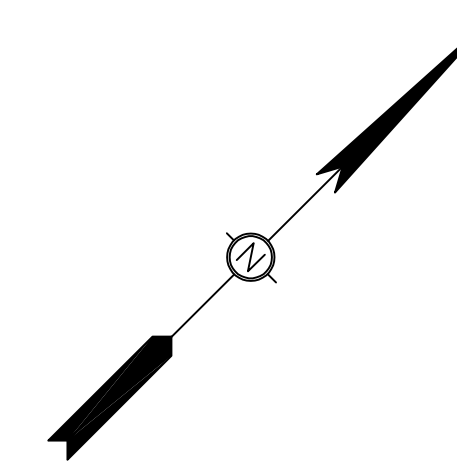
JANUARY 13, 2025  
© CJ ARCHITECTS LLC

UNIT PLAN

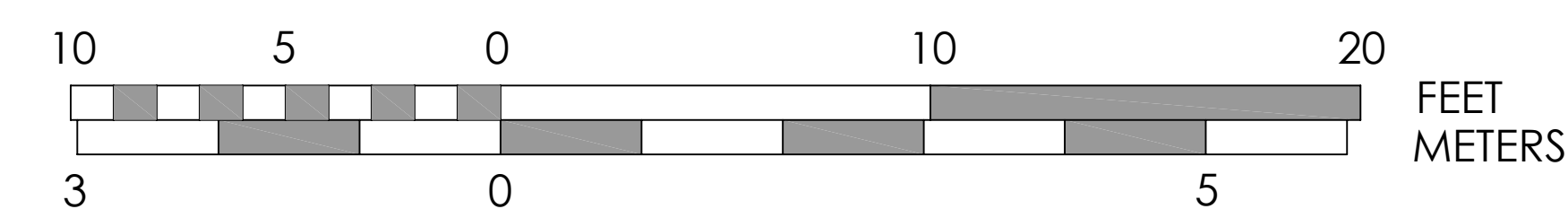
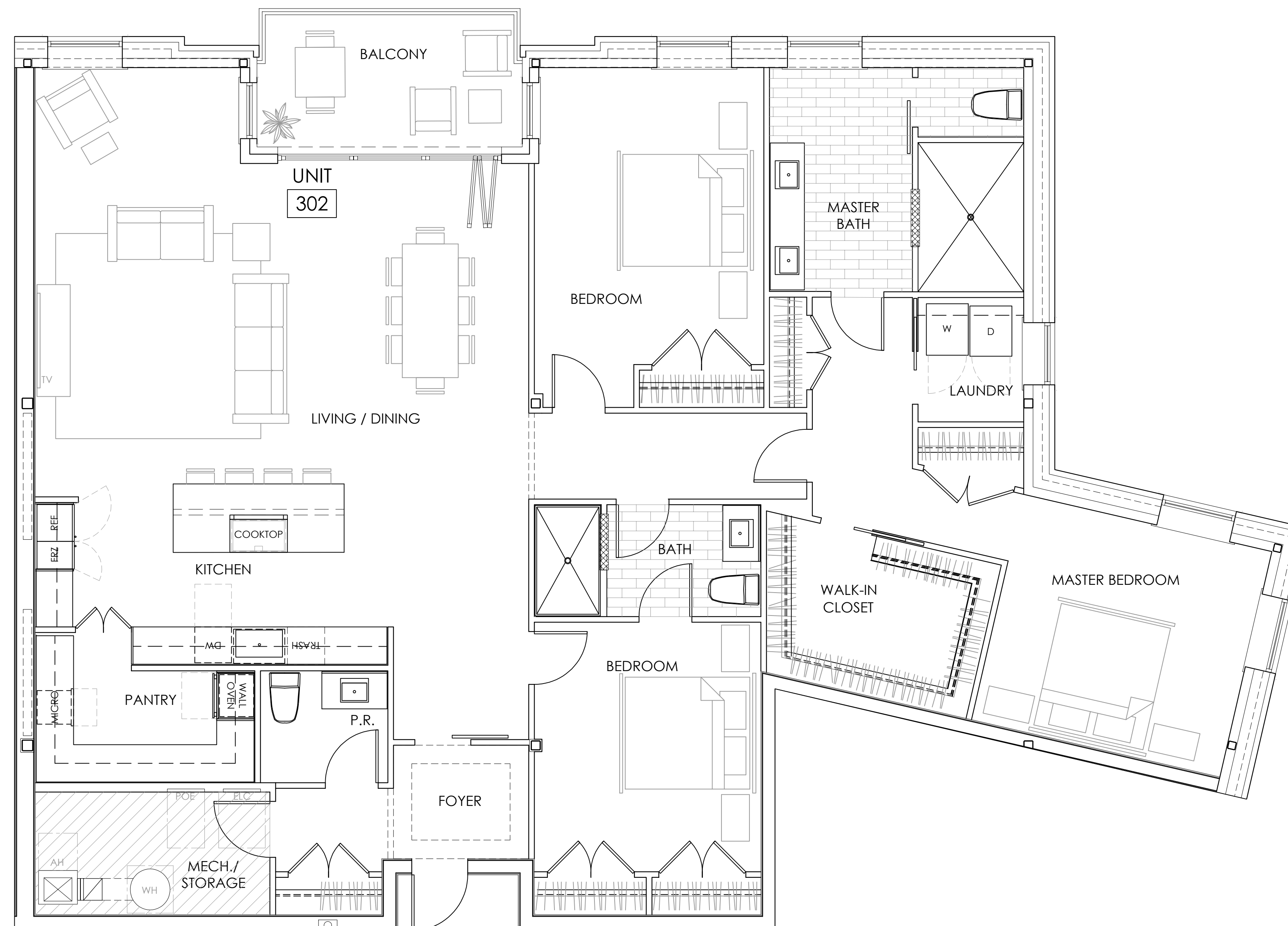
70 MAPLEWOOD AVENUE  
PORTSMOUTH, NEW HAMPSHIRE



NOTE: DIMENSIONS AND AREAS PROVIDED ARE PRELIMINARY AND ARE SUBJECT TO CHANGE DURING DESIGN DEVELOPMENT AND CONSTRUCTION. AS-BUILT CONDITIONS HAVE NOT BEEN VERIFIED.



UNIT KEY PLAN



302

JANUARY 13, 2025  
© CJ ARCHITECTS LLC

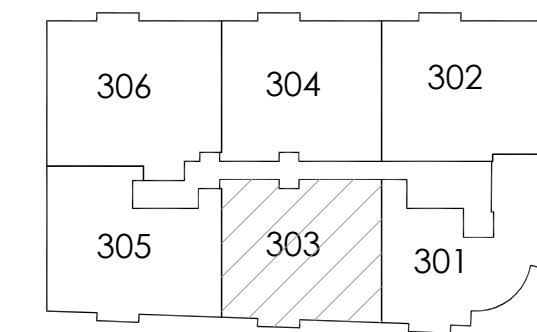
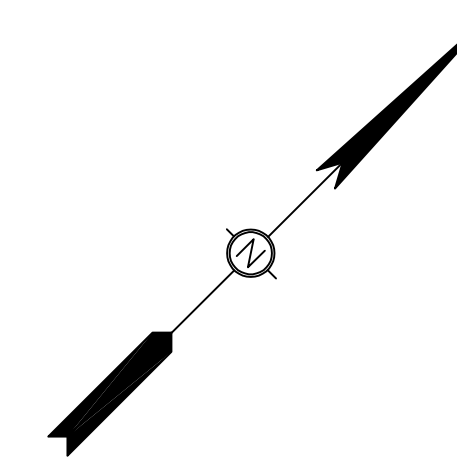
### UNIT PLAN

70 MAPLEWOOD AVENUE  
PORTSMOUTH, NEW HAMPSHIRE

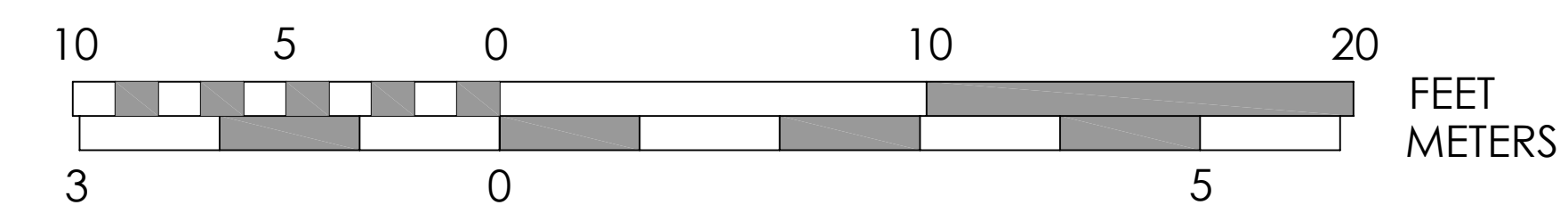
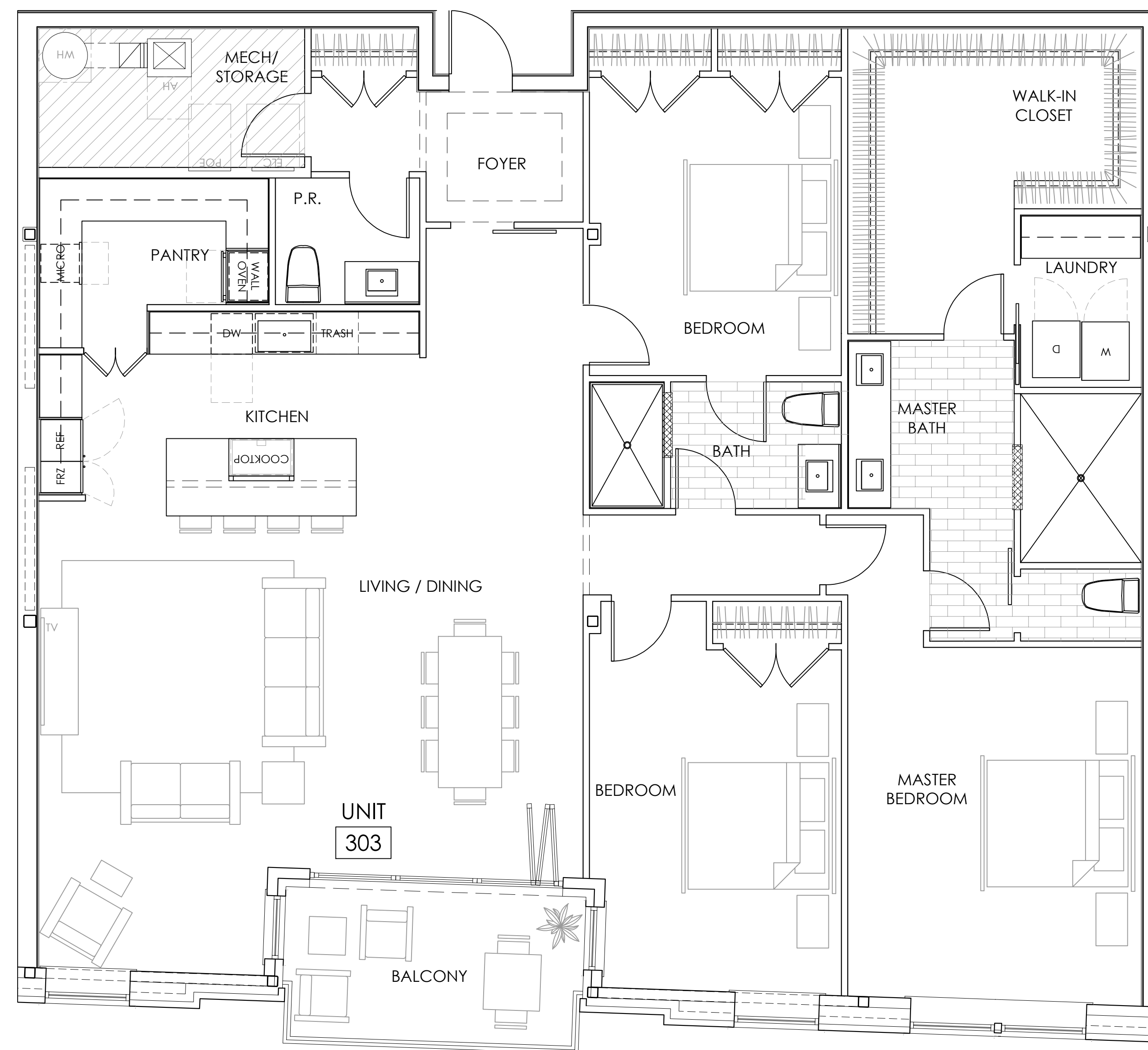


NOTE: DIMENSIONS AND AREAS PROVIDED ARE PRELIMINARY AND ARE SUBJECT TO CHANGE DURING DESIGN DEVELOPMENT AND CONSTRUCTION. AS-BUILT CONDITIONS HAVE NOT BEEN VERIFIED.





UNIT KEY PLAN



303

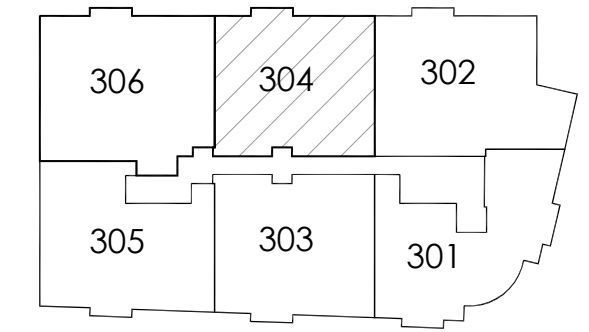
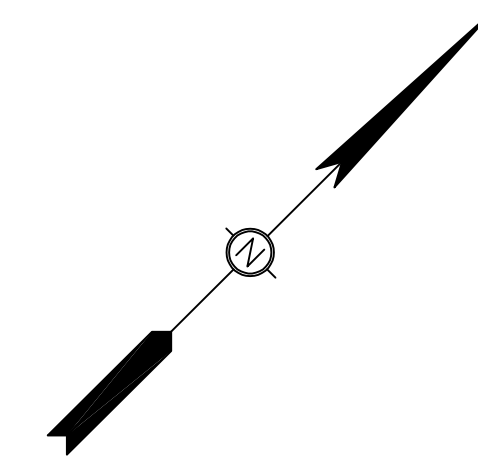
JANUARY 13, 2025  
© CJ ARCHITECTS LLC

UNIT PLAN

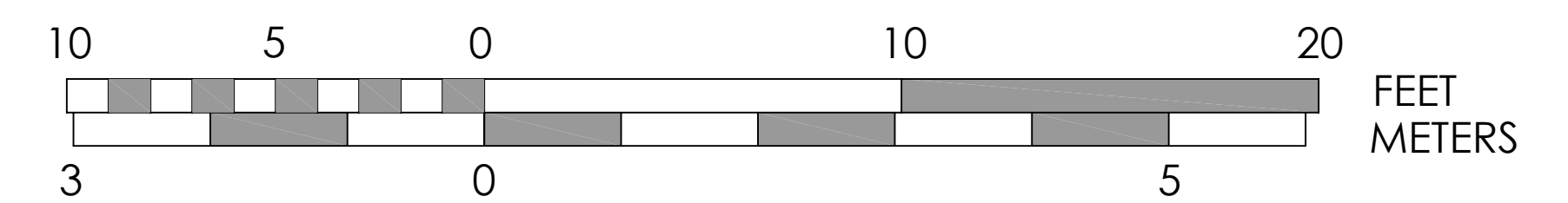
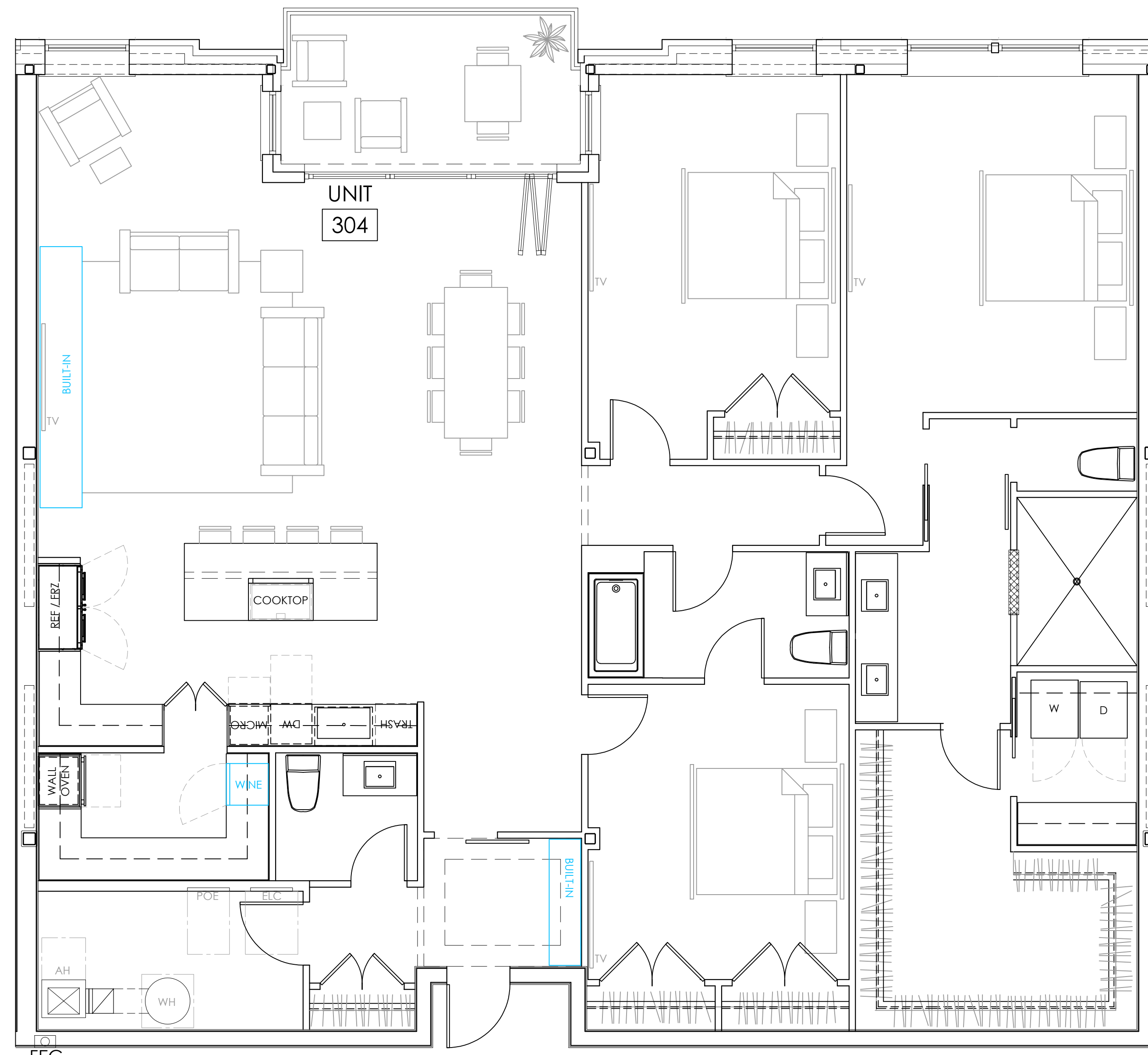
70 MAPLEWOOD AVENUE  
PORTSMOUTH, NEW HAMPSHIRE



NOTE: DIMENSIONS AND AREAS PROVIDED ARE PRELIMINARY AND ARE SUBJECT TO CHANGE DURING DESIGN DEVELOPMENT AND CONSTRUCTION. AS-BUILT CONDITIONS HAVE NOT BEEN VERIFIED.



UNIT KEY PLAN



304

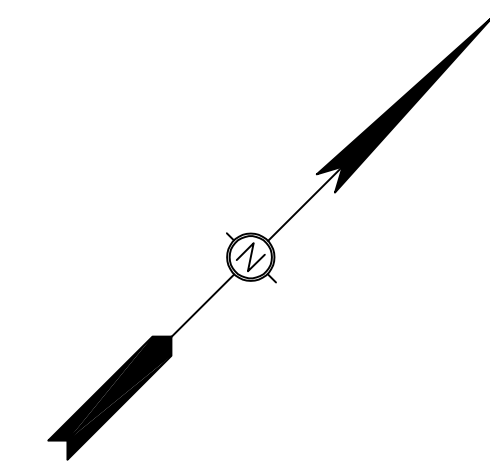
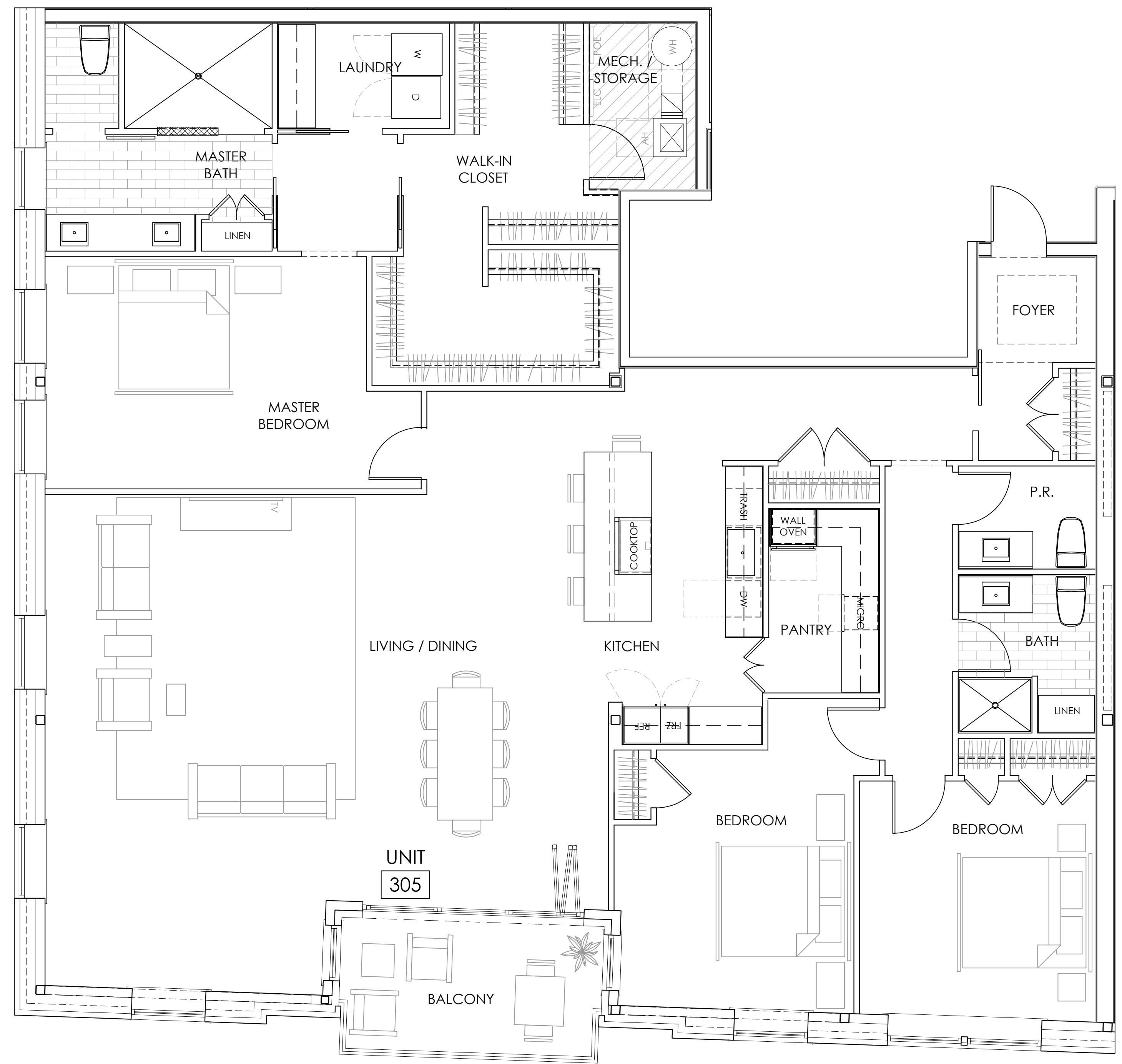
JANUARY 13, 2025  
© CJ ARCHITECTS LLC

UNIT PLAN

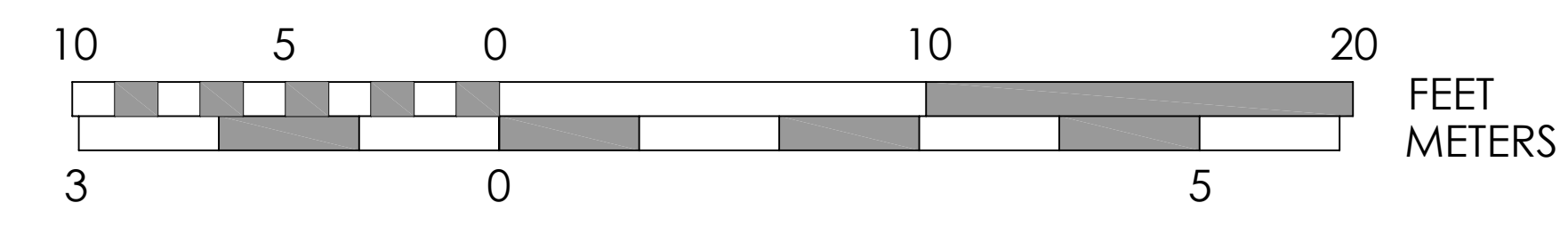
70 MAPLEWOOD AVENUE  
PORTSMOUTH, NEW HAMPSHIRE



NOTE: DIMENSIONS AND AREAS PROVIDED ARE PRELIMINARY AND ARE SUBJECT TO CHANGE DURING DESIGN DEVELOPMENT AND CONSTRUCTION. AS-BUILT CONDITIONS HAVE NOT BEEN VERIFIED.



UNIT KEY PLAN



305

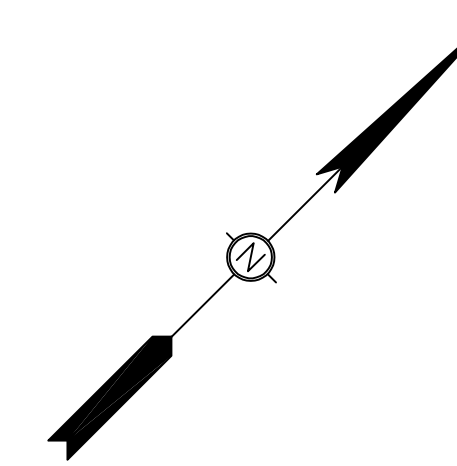
JANUARY 13, 2025  
© CJ ARCHITECTS LLC

UNIT PLAN

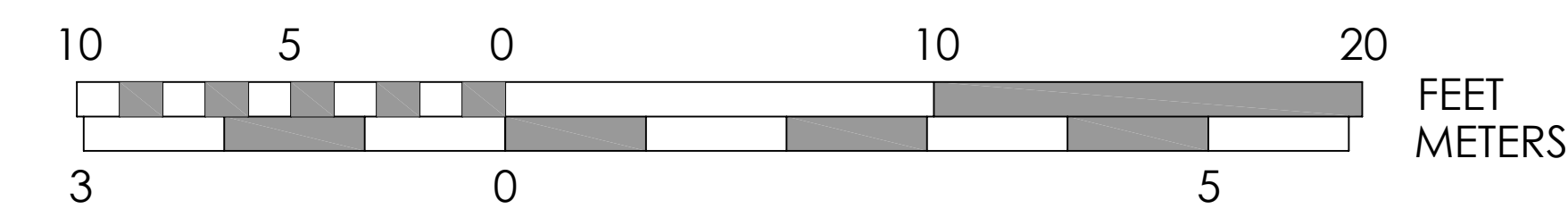
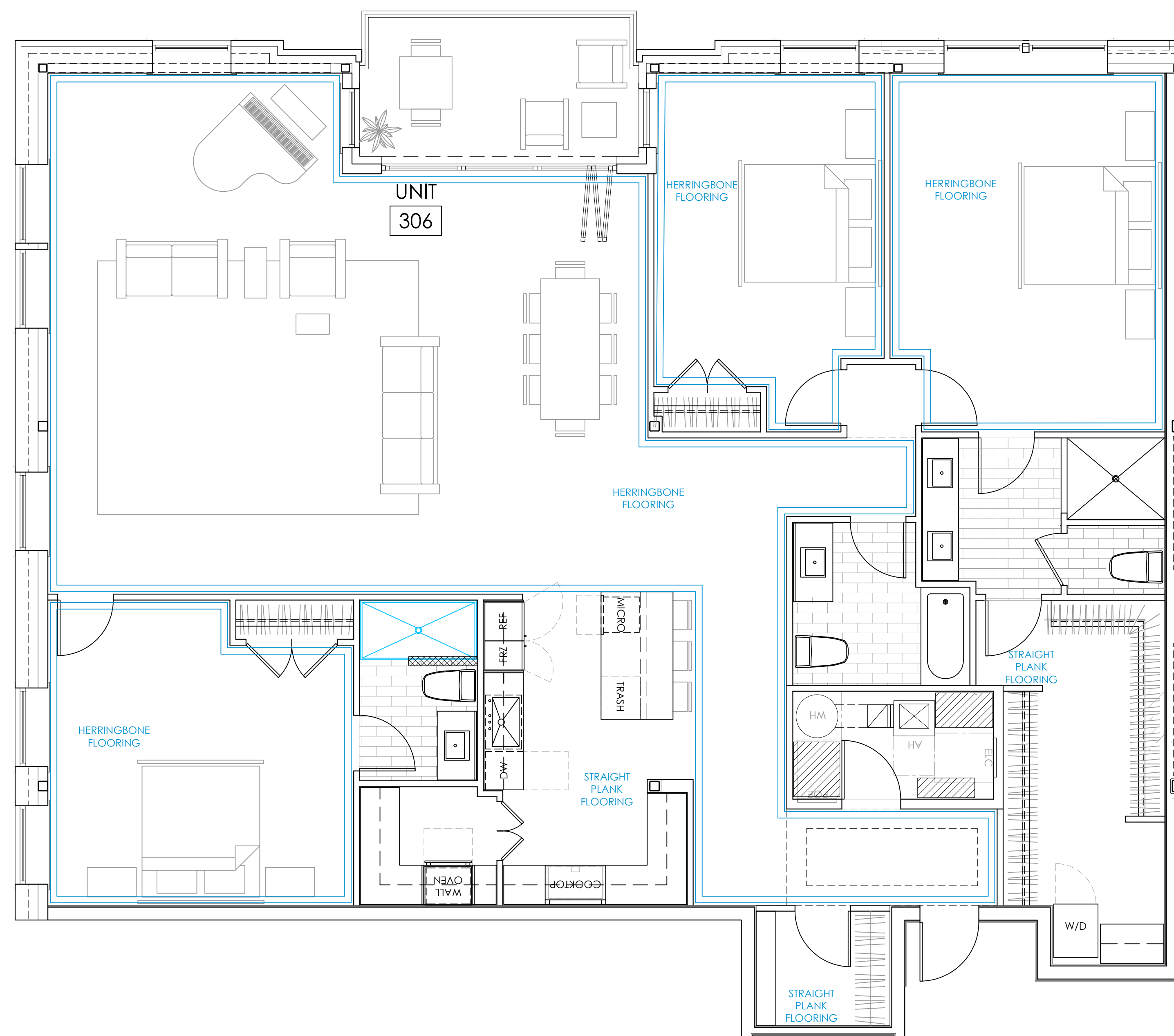
70 MAPLEWOOD AVENUE  
PORTSMOUTH, NEW HAMPSHIRE



NOTE: DIMENSIONS AND AREAS PROVIDED ARE PRELIMINARY AND ARE SUBJECT TO CHANGE DURING DESIGN DEVELOPMENT AND CONSTRUCTION. AS-BUILT CONDITIONS HAVE NOT BEEN VERIFIED.



UNIT KEY PLAN



306

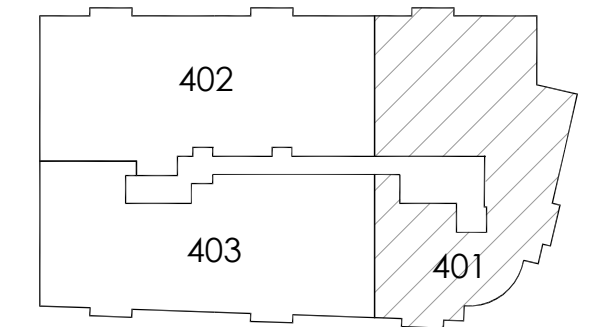
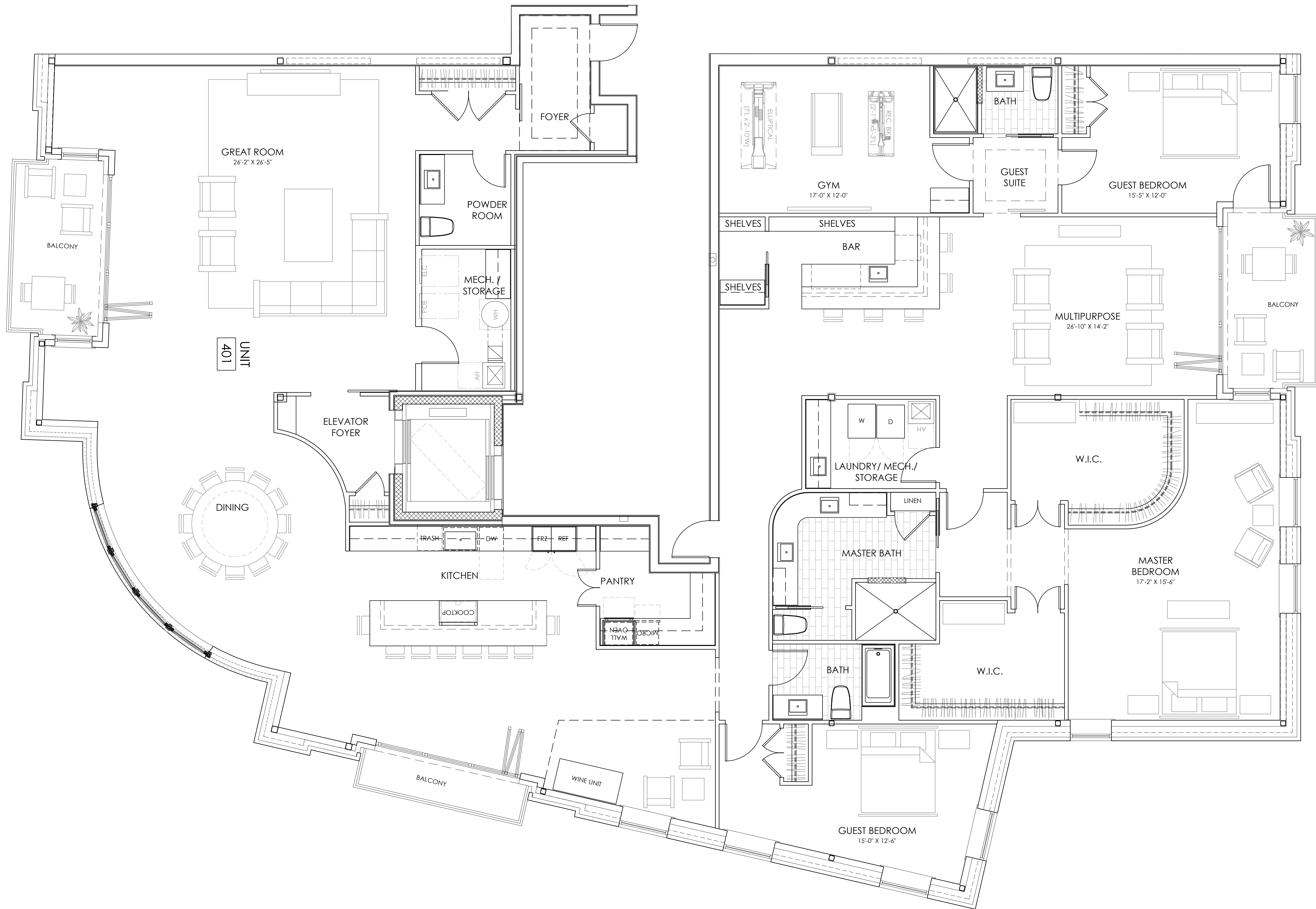
JANUARY 13, 2025  
© CJ ARCHITECTS LLC

UNIT PLAN

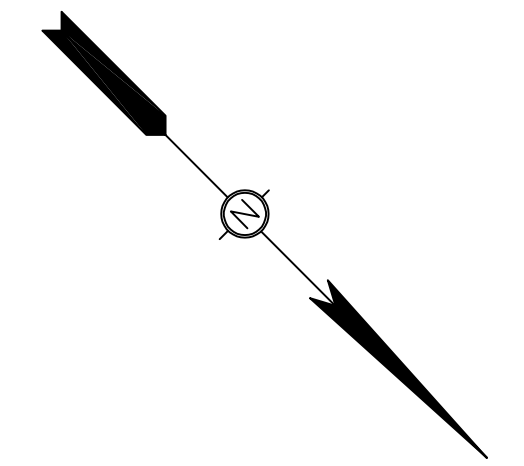
70 MAPLEWOOD AVENUE  
PORTSMOUTH, NEW HAMPSHIRE



NOTE: DIMENSIONS AND AREAS PROVIDED ARE PRELIMINARY AND ARE SUBJECT TO CHANGE DURING DESIGN DEVELOPMENT AND CONSTRUCTION. AS-BUILT CONDITIONS HAVE NOT BEEN VERIFIED.



UNIT KEY PLAN



401

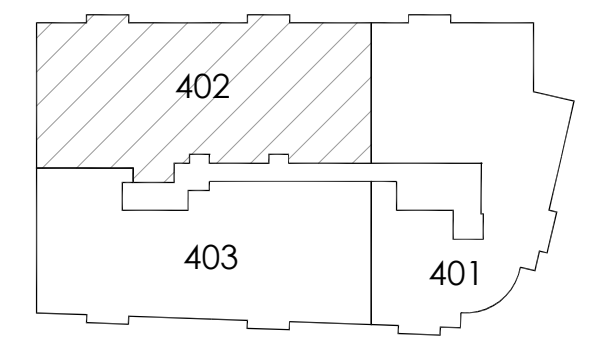
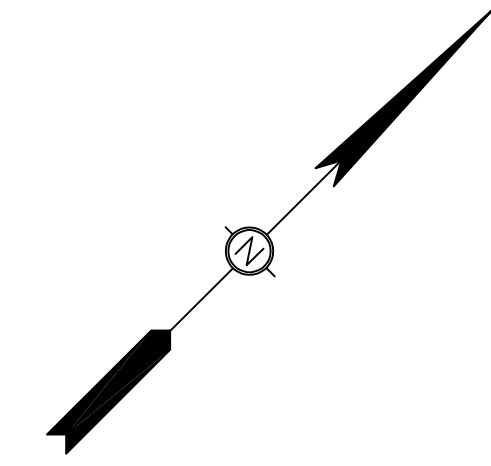
JANUARY 13, 2025  
© CJ ARCHITECTS LLC

UNIT PLAN

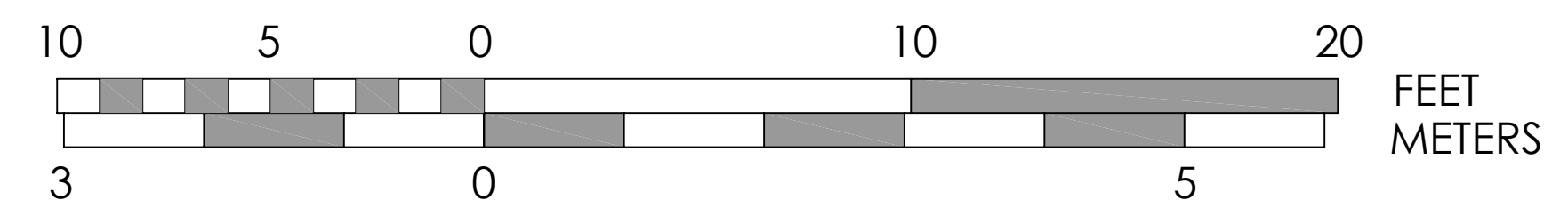
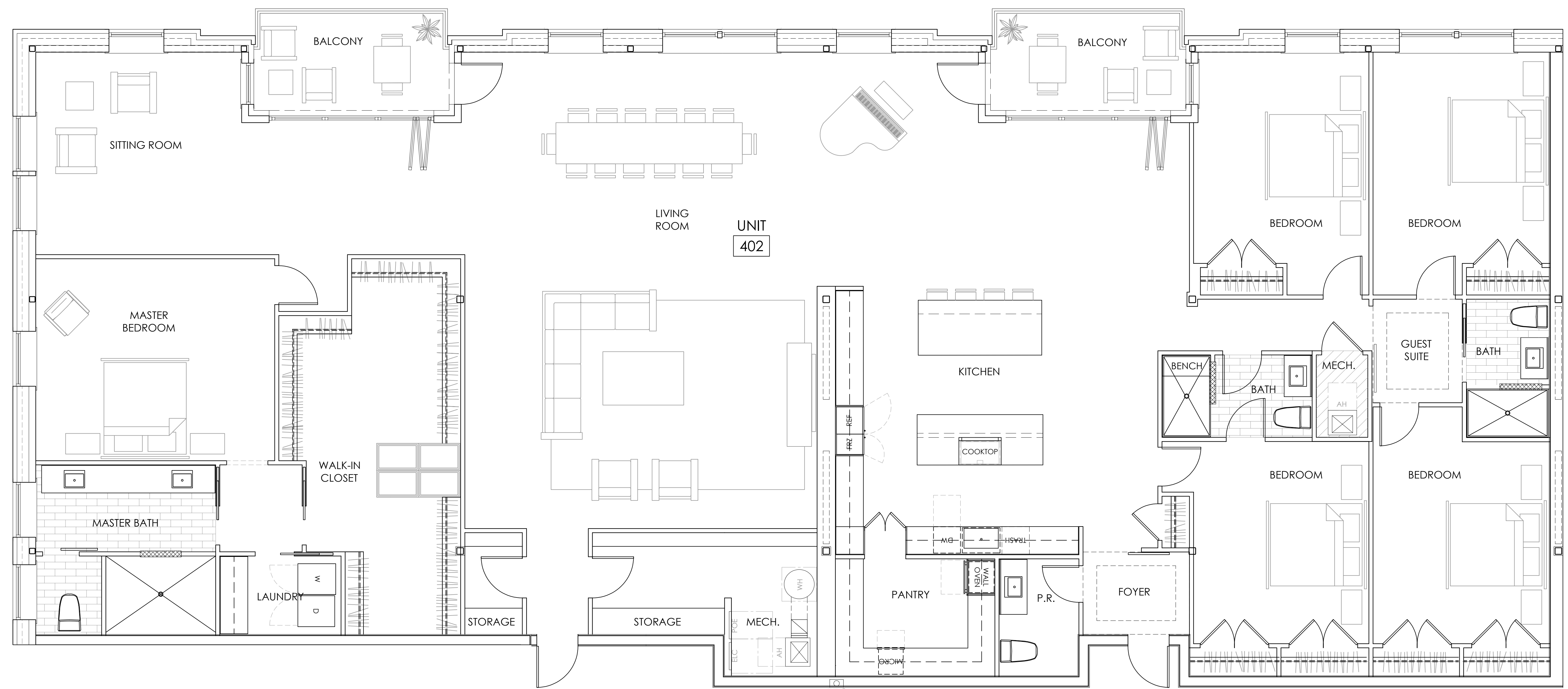
70 MAPLEWOOD AVENUE  
PORTSMOUTH, NEW HAMPSHIRE



NOTE: DIMENSIONS AND AREAS PROVIDED ARE PRELIMINARY AND ARE SUBJECT TO CHANGE DURING DESIGN DEVELOPMENT AND CONSTRUCTION. AS-BUILT CONDITIONS HAVE NOT BEEN VERIFIED.



UNIT KEY PLAN



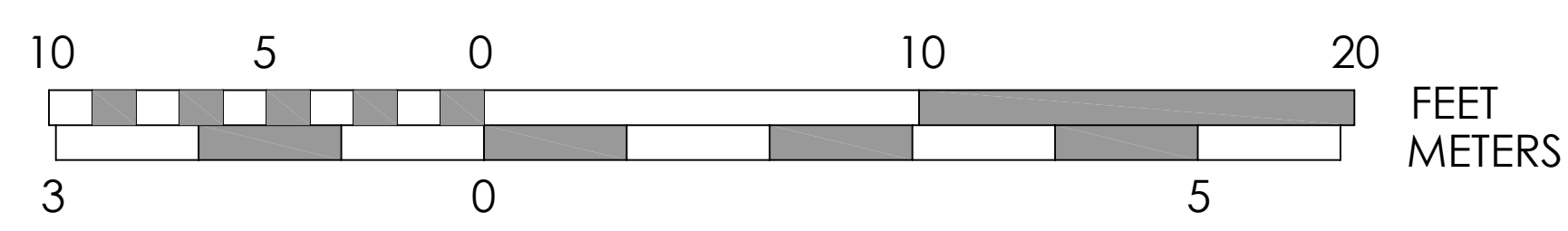
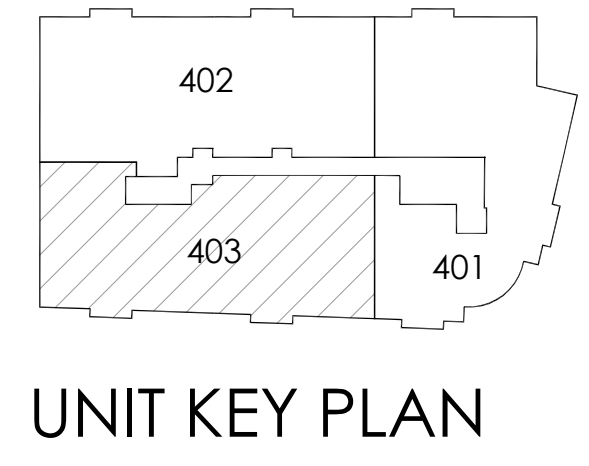
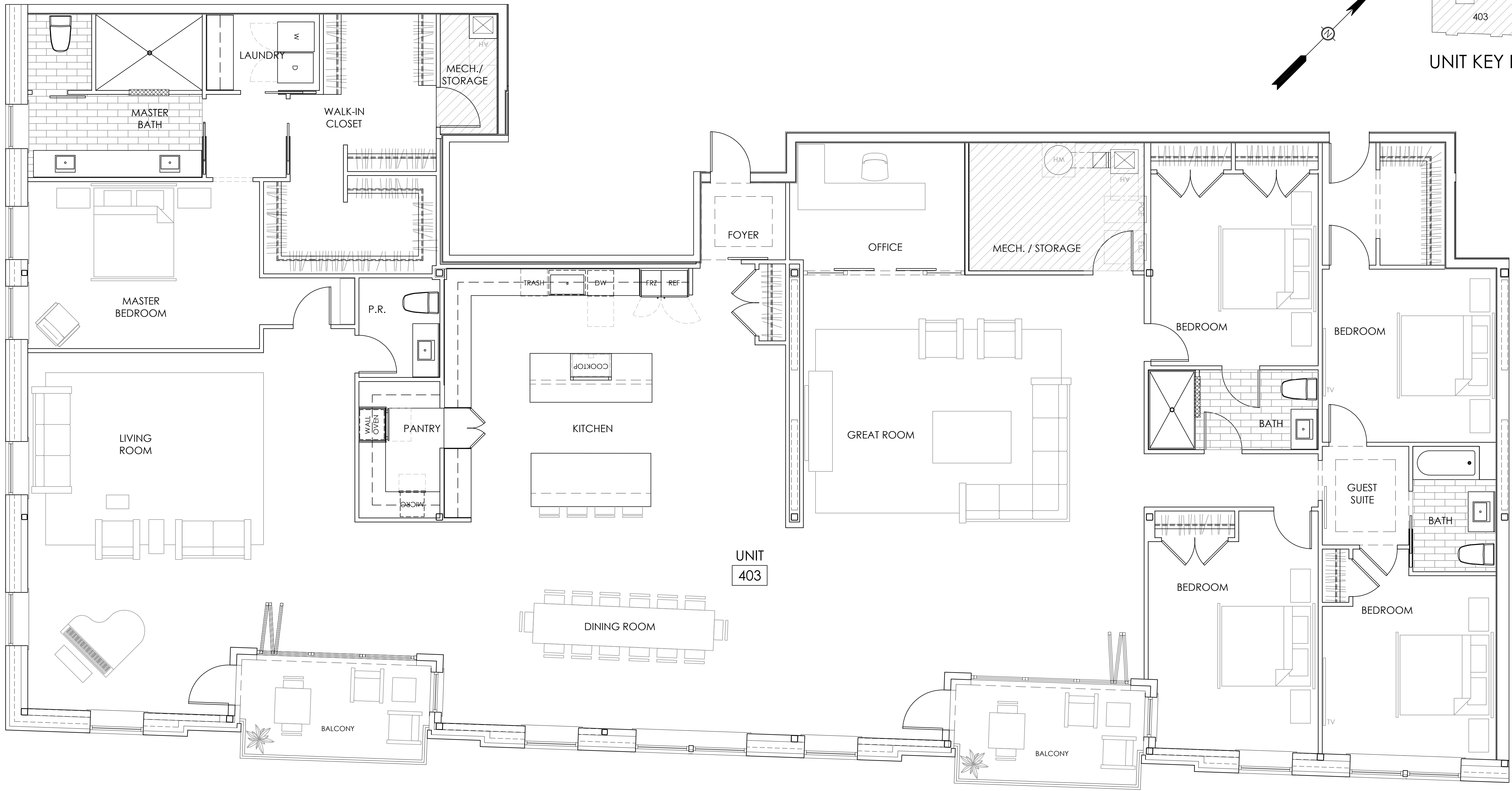
**402** JANUARY 13, 2025  
© CJ ARCHITECTS LLC

# UNIT PLAN

70 MAPLEWOOD AVENUE  
PORTSMOUTH, NEW HAMPSHIRE



NOTE: DIMENSIONS AND AREAS PROVIDED ARE PRELIMINARY AND ARE SUBJECT TO CHANGE DURING DESIGN DEVELOPMENT AND CONSTRUCTION. AS-BUILT CONDITIONS HAVE NOT BEEN VERIFIED.



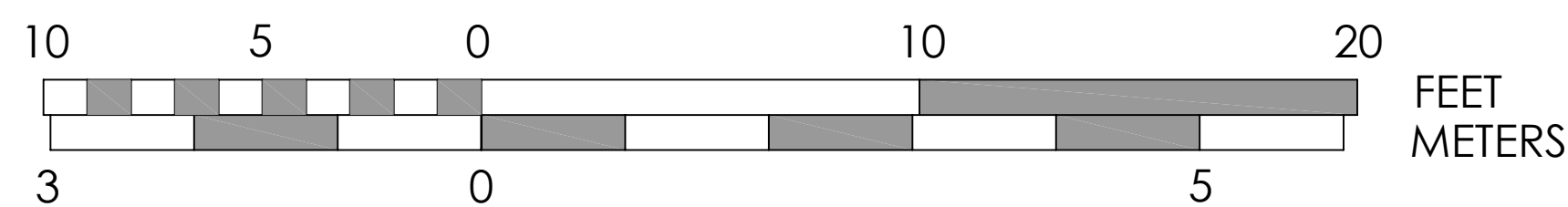
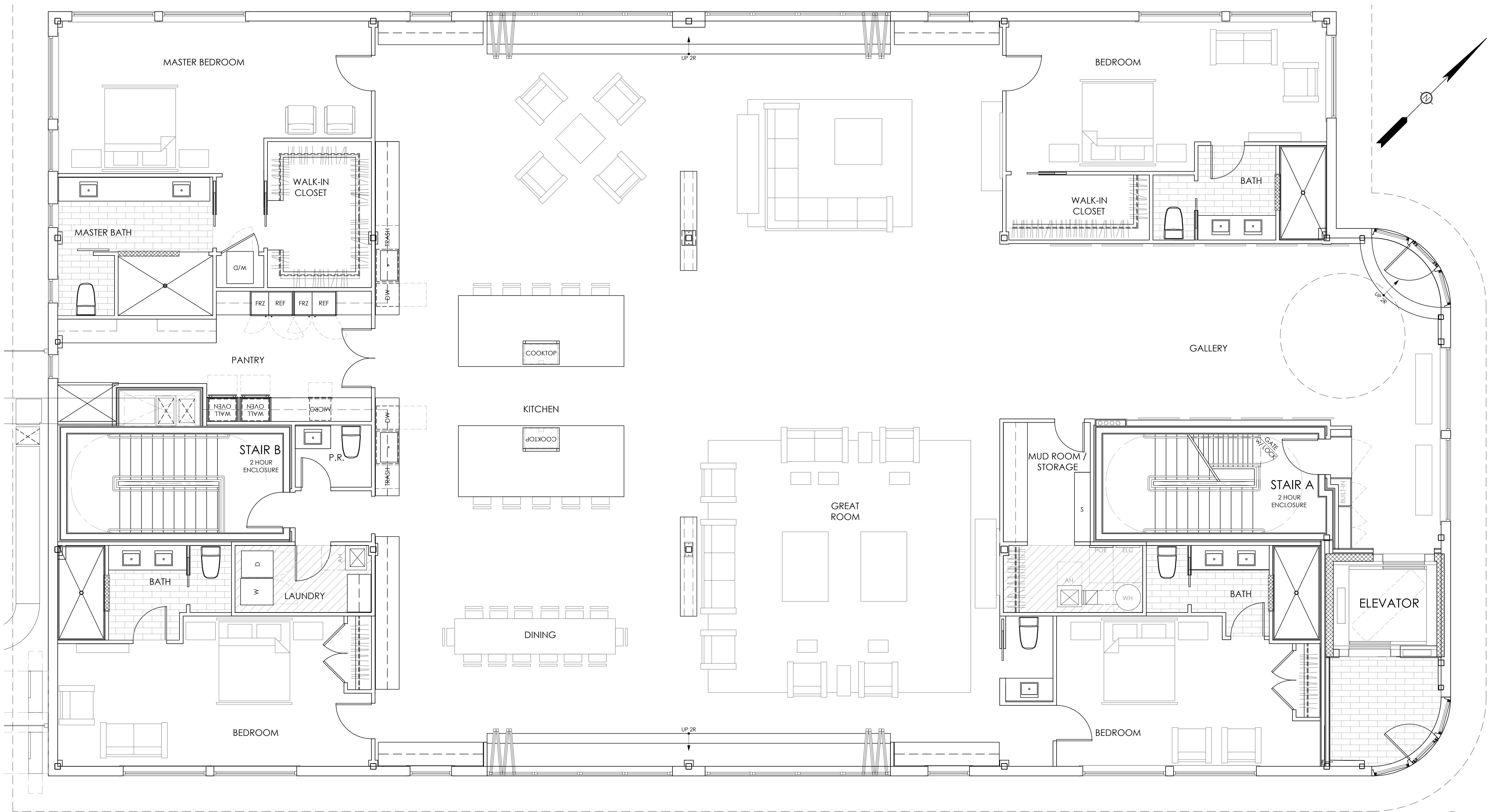
**403** JANUARY 13, 2025  
© CJ ARCHITECTS LLC

**UNIT PLAN**

**70 MAPLEWOOD AVENUE**  
PORTSMOUTH, NEW HAMPSHIRE



NOTE: DIMENSIONS AND AREAS PROVIDED ARE PRELIMINARY AND ARE SUBJECT TO CHANGE DURING DESIGN DEVELOPMENT AND CONSTRUCTION. AS-BUILT CONDITIONS HAVE NOT BEEN VERIFIED.



501

JANUARY 13, 2025  
© CJ ARCHITECTS LLC

UNIT PLAN

70 MAPLEWOOD AVENUE  
PORTSMOUTH, NEW HAMPSHIRE



NOTE: DIMENSIONS AND AREAS PROVIDED ARE PRELIMINARY AND ARE SUBJECT TO CHANGE DURING DESIGN DEVELOPMENT AND CONSTRUCTION. AS-BUILT CONDITIONS HAVE NOT BEEN VERIFIED.