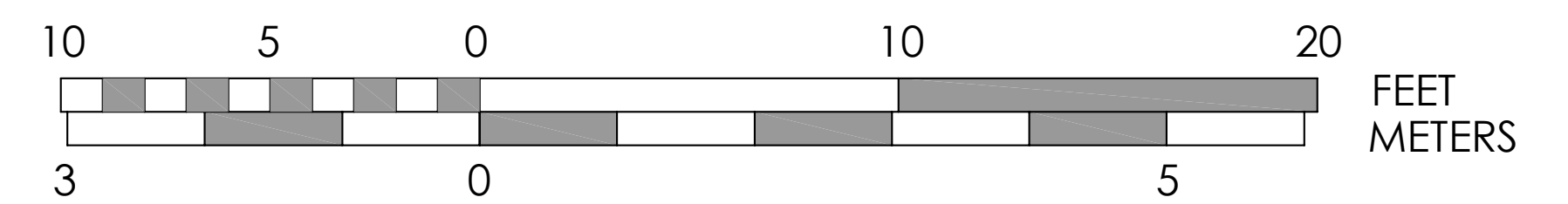


UNIT KEY PLAN



201

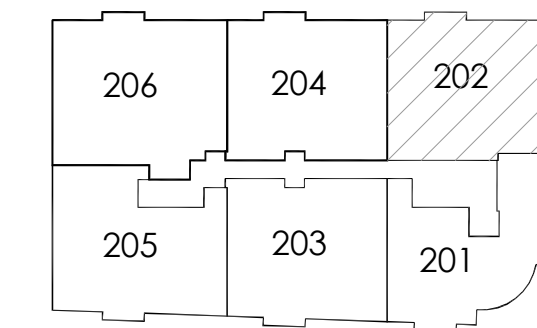
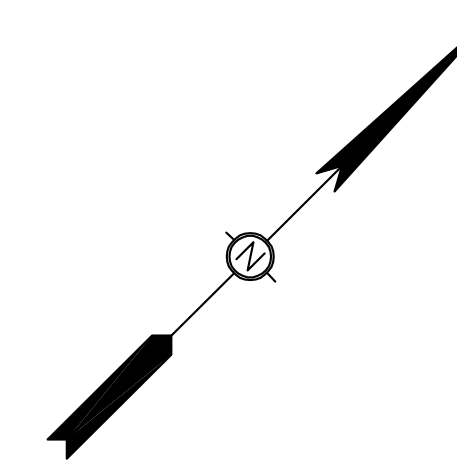
OCTOBER 10, 2024
© CJ ARCHITECTS LLC

UNIT PLAN

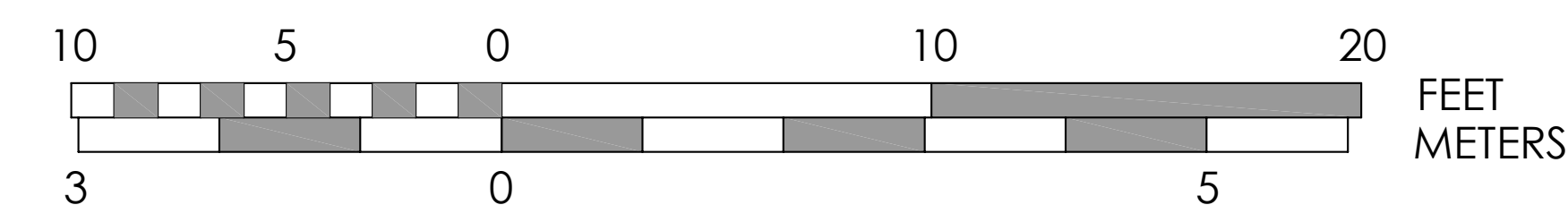
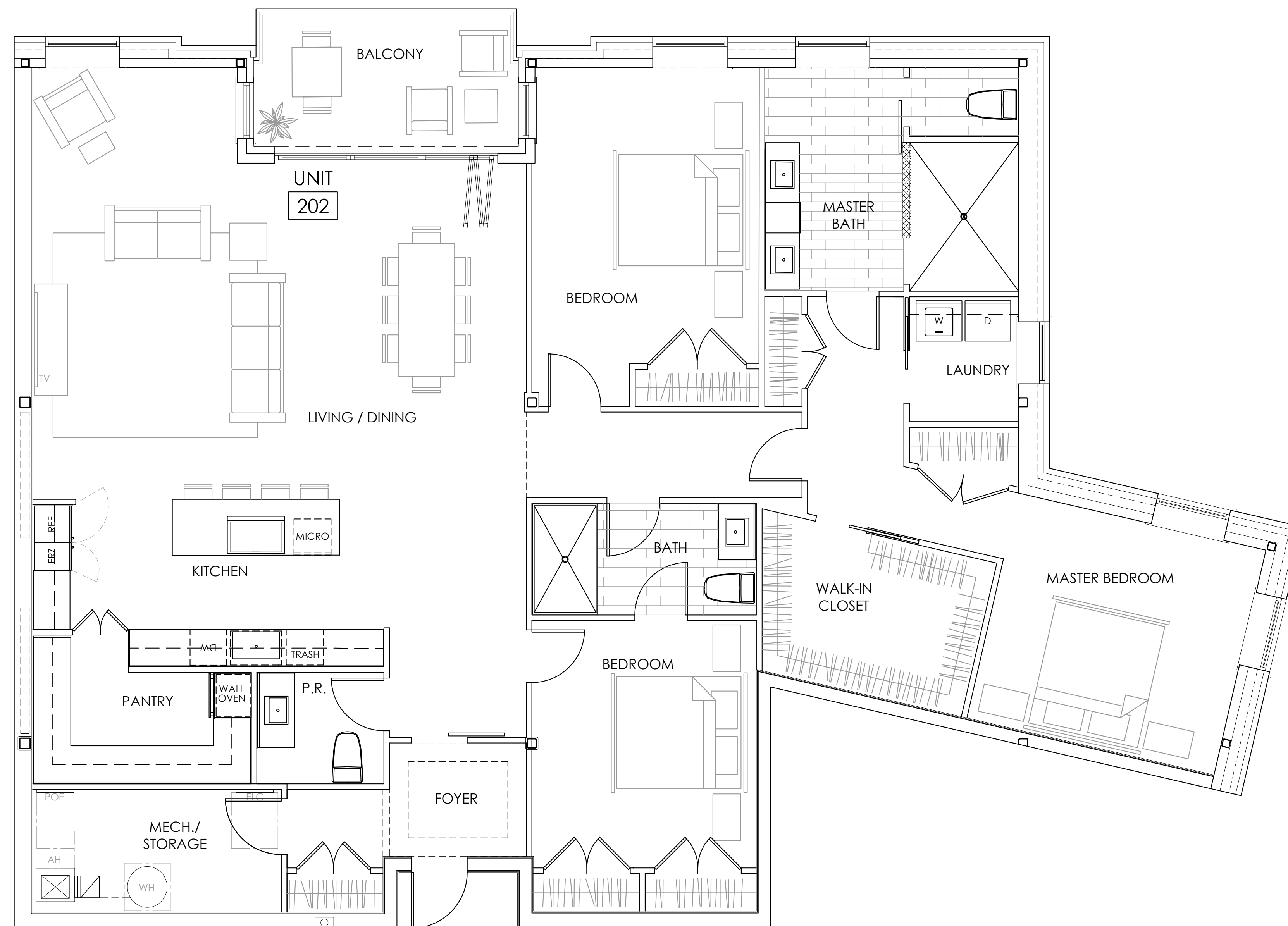
70 MAPLEWOOD AVENUE
PORTSMOUTH, NEW HAMPSHIRE



NOTE: DIMENSIONS AND AREAS PROVIDED ARE PRELIMINARY AND ARE SUBJECT TO CHANGE DURING DESIGN DEVELOPMENT AND CONSTRUCTION. AS-BUILT CONDITIONS HAVE NOT BEEN VERIFIED.



UNIT KEY PLAN



202

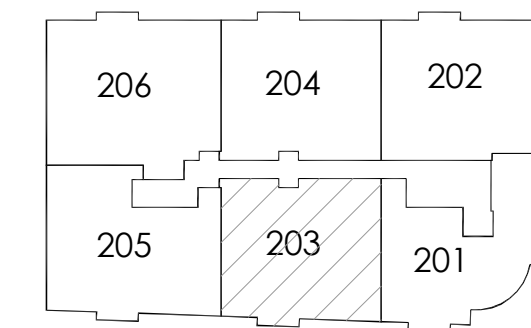
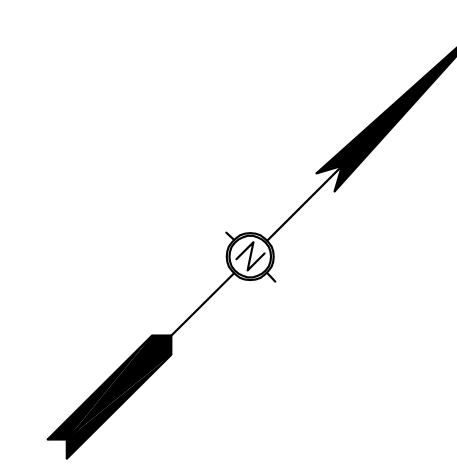
OCTOBER 10, 2024
© CJ ARCHITECTS LLC

UNIT PLAN

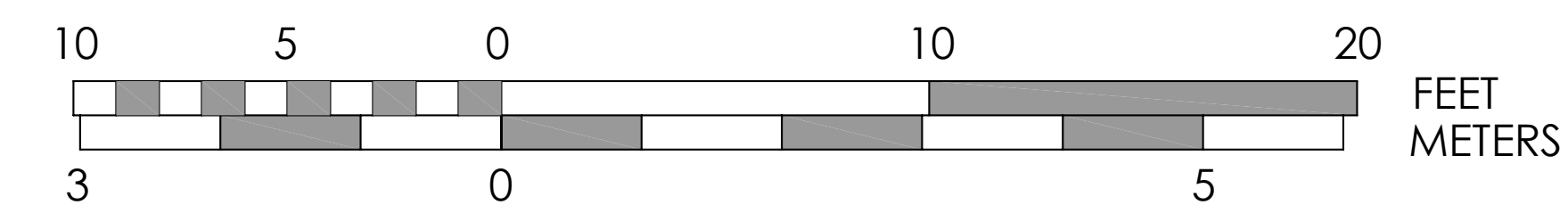
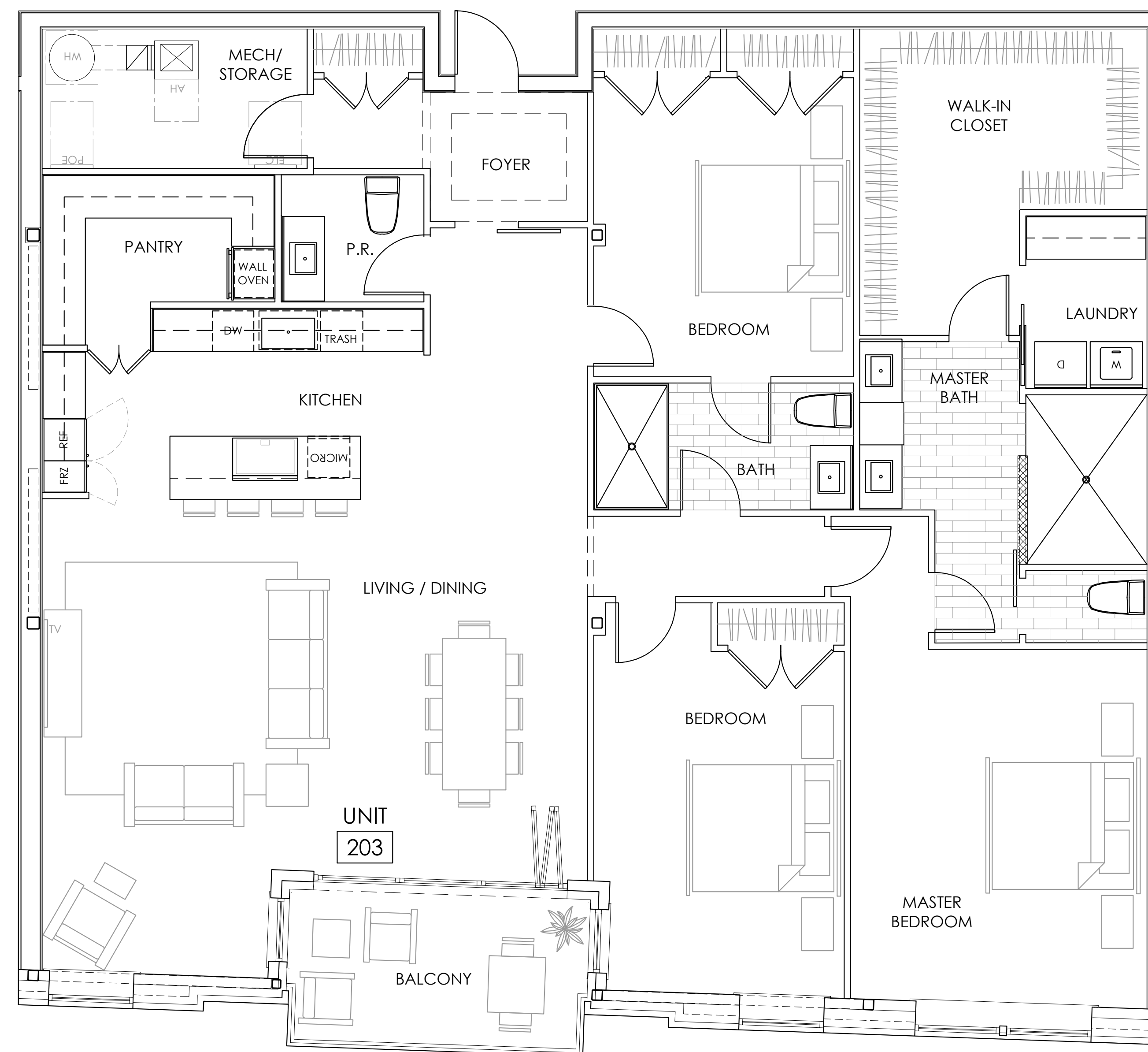
70 MAPLEWOOD AVENUE
PORTSMOUTH, NEW HAMPSHIRE



NOTE: DIMENSIONS AND AREAS PROVIDED ARE PRELIMINARY AND ARE SUBJECT TO CHANGE DURING DESIGN DEVELOPMENT AND CONSTRUCTION. AS-BUILT CONDITIONS HAVE NOT BEEN VERIFIED.



UNIT KEY PLAN



203

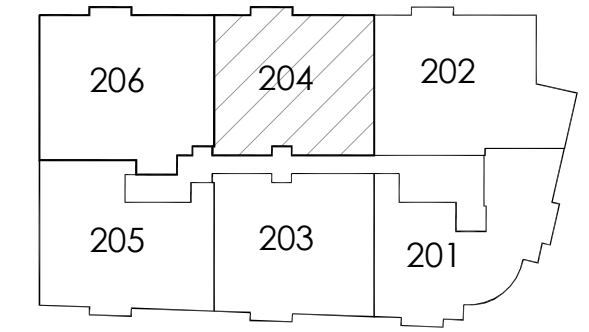
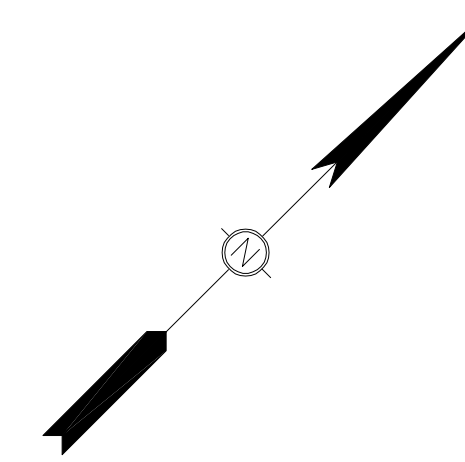
OCTOBER 10, 2024
© CJ ARCHITECTS LLC

UNIT PLAN

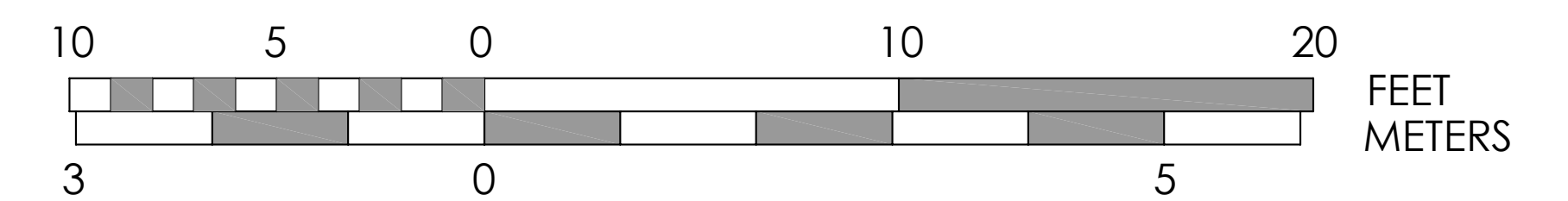
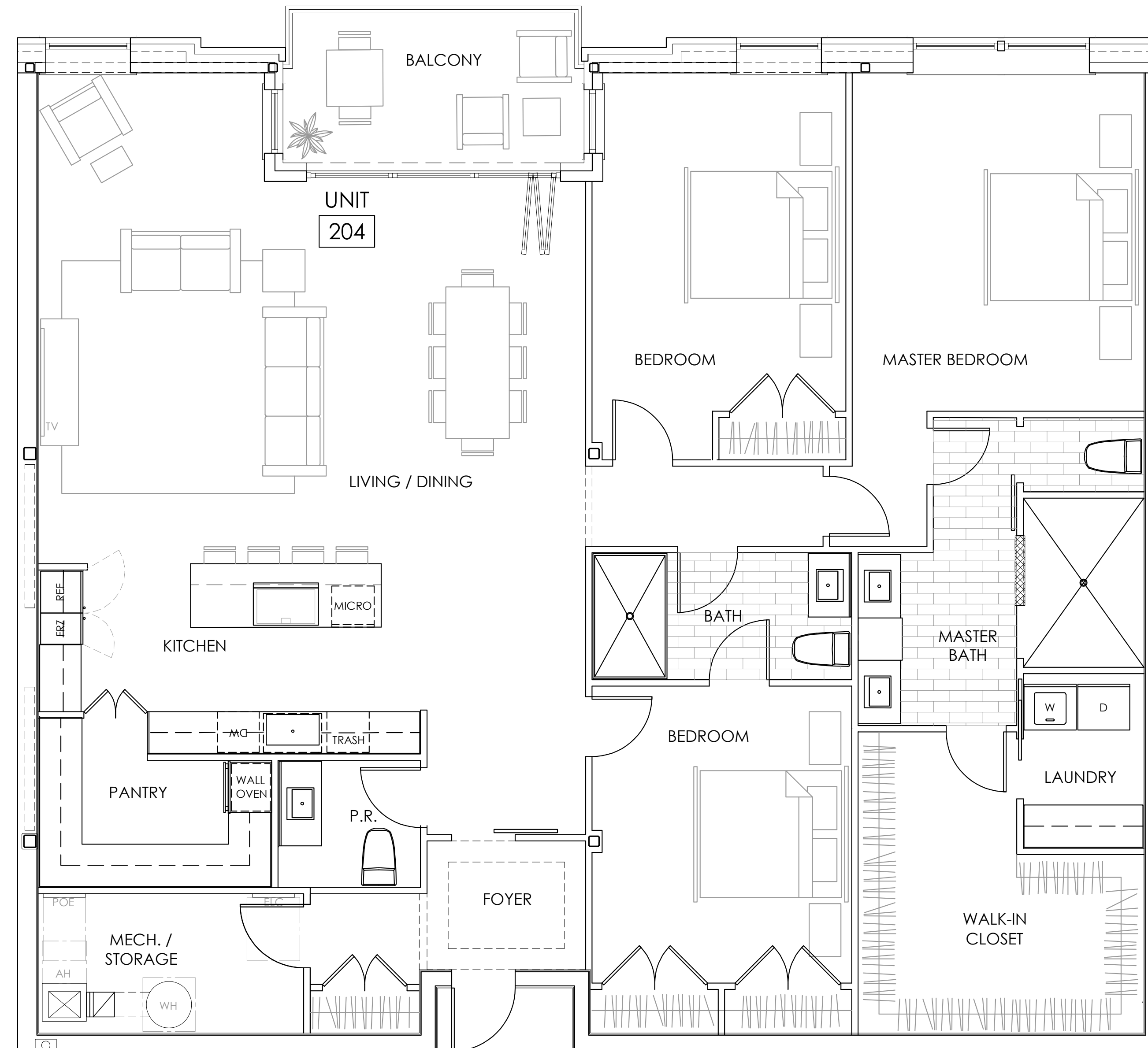
70 MAPLEWOOD AVENUE
PORTSMOUTH, NEW HAMPSHIRE



NOTE: DIMENSIONS AND AREAS PROVIDED ARE PRELIMINARY AND ARE SUBJECT TO CHANGE DURING DESIGN DEVELOPMENT AND CONSTRUCTION. AS-BUILT CONDITIONS HAVE NOT BEEN VERIFIED.



UNIT KEY PLAN



204

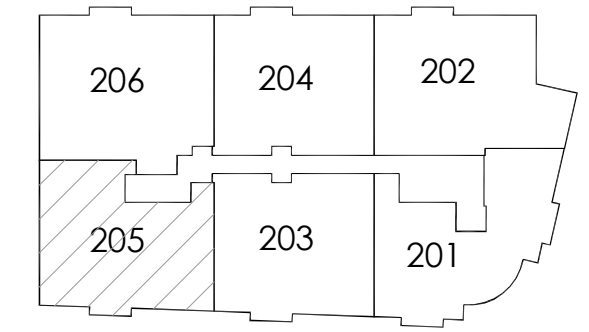
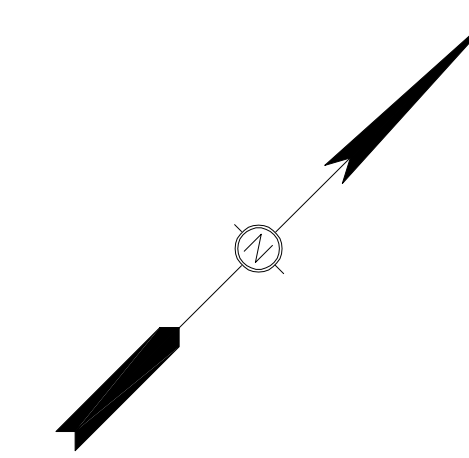
OCTOBER 10, 2024
© CJ ARCHITECTS LLC

UNIT PLAN

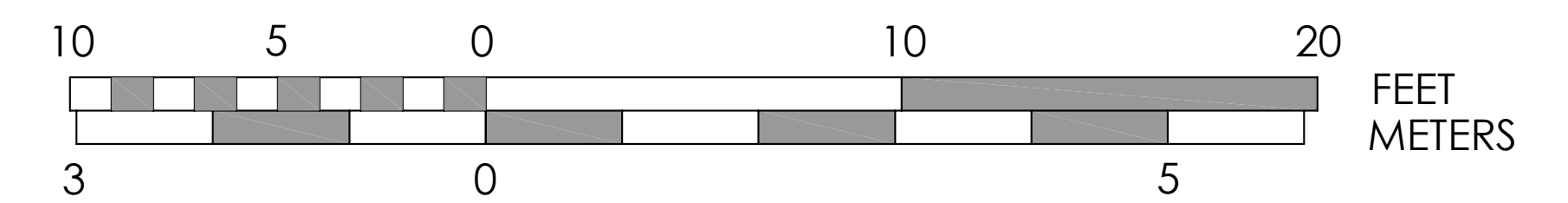
70 MAPLEWOOD AVENUE
PORTSMOUTH, NEW HAMPSHIRE



NOTE: DIMENSIONS AND AREAS PROVIDED ARE PRELIMINARY AND ARE SUBJECT TO CHANGE DURING DESIGN DEVELOPMENT AND CONSTRUCTION. AS-BUILT CONDITIONS HAVE NOT BEEN VERIFIED.



UNIT KEY PLAN



205

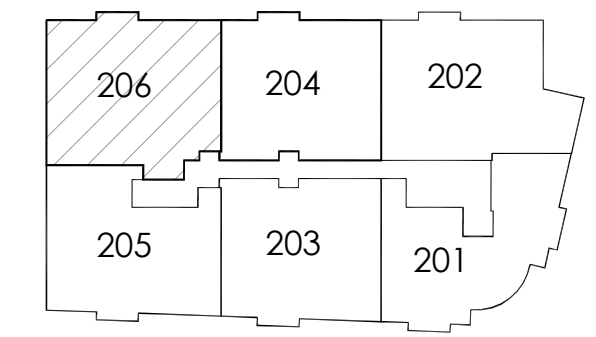
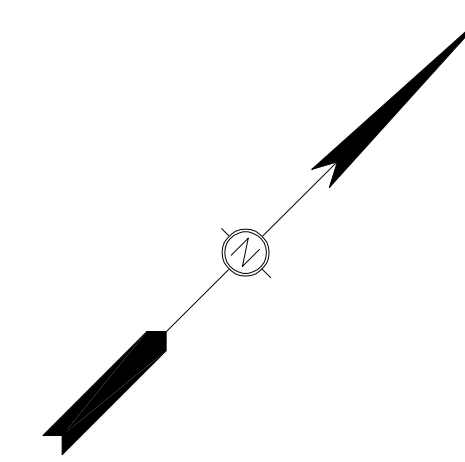
OCTOBER 10, 2024
© CJ ARCHITECTS LLC

UNIT PLAN

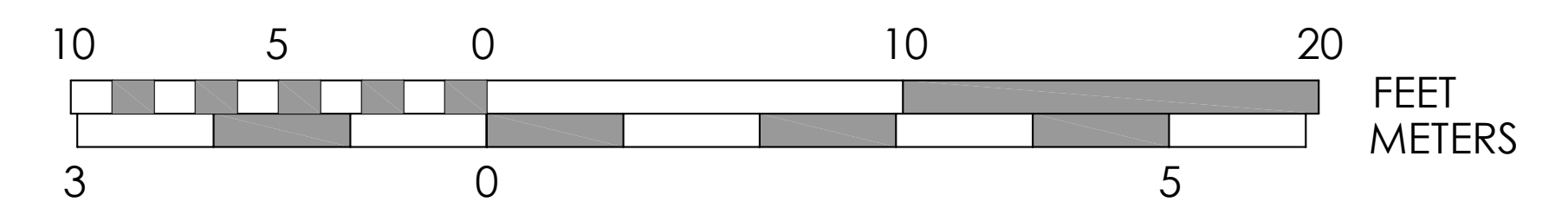
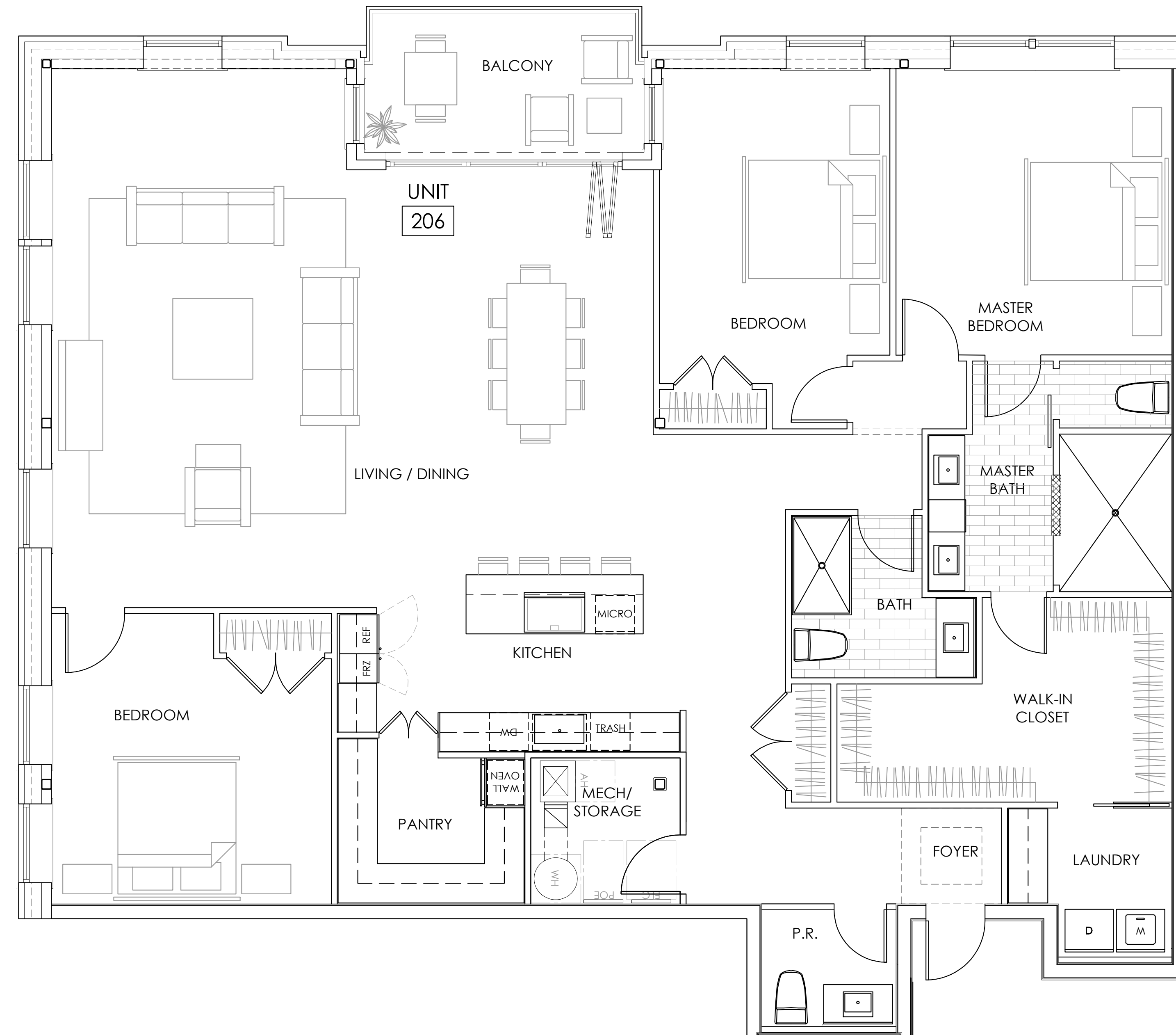
70 MAPLEWOOD AVENUE
PORTSMOUTH, NEW HAMPSHIRE



NOTE: DIMENSIONS AND AREAS PROVIDED ARE PRELIMINARY AND ARE SUBJECT TO CHANGE DURING DESIGN DEVELOPMENT AND CONSTRUCTION. AS-BUILT CONDITIONS HAVE NOT BEEN VERIFIED.



UNIT KEY PLAN



206

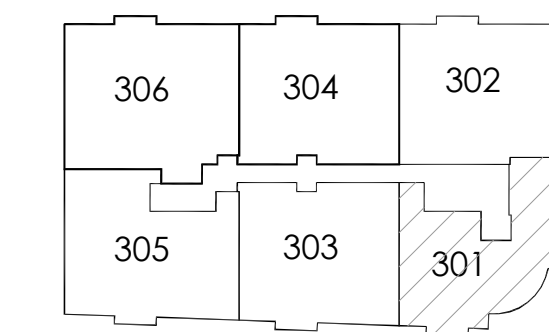
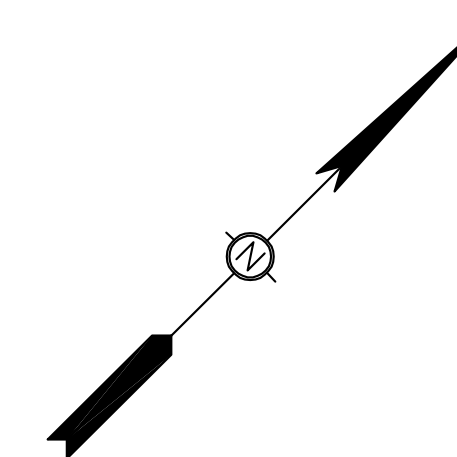
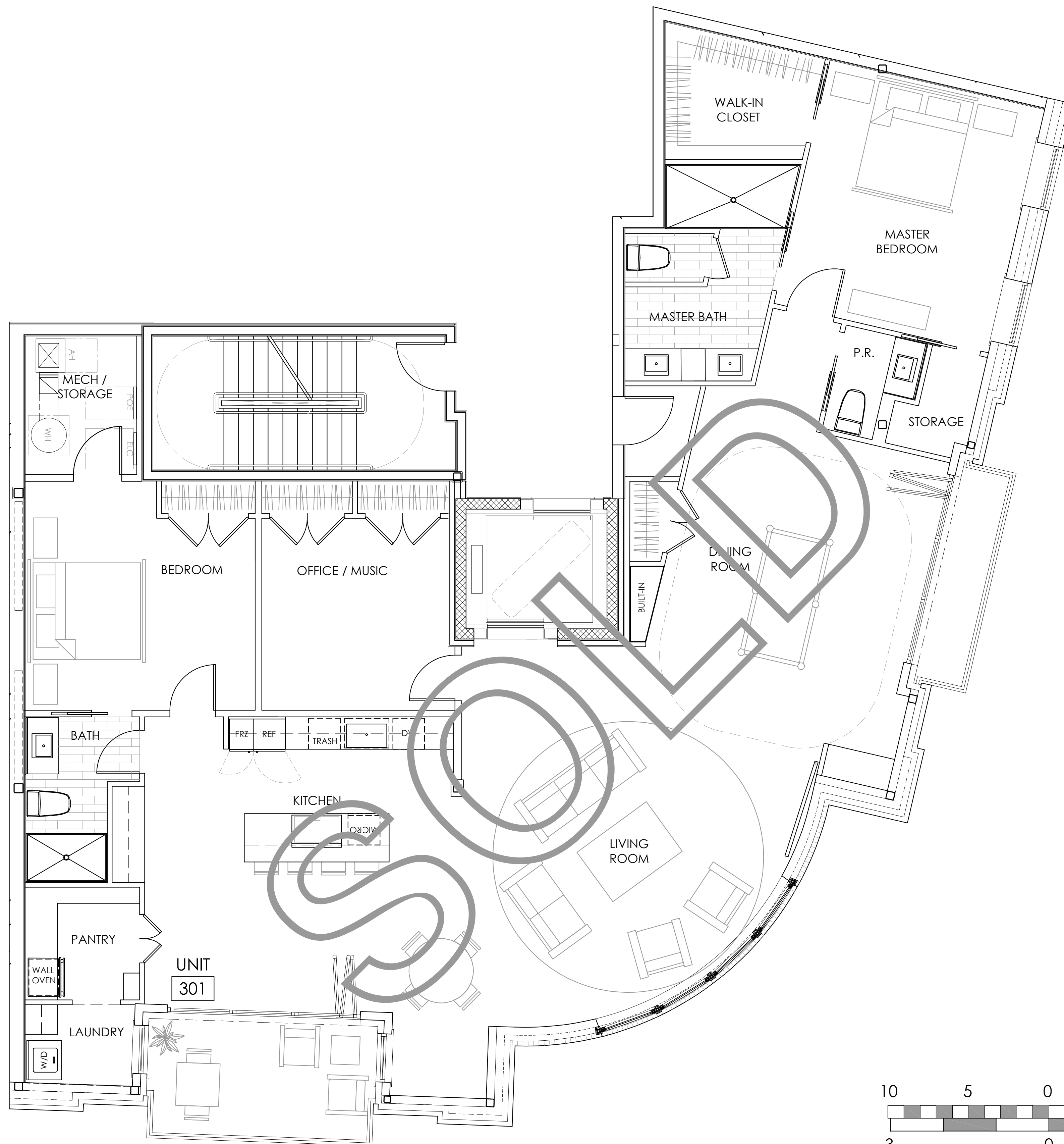
OCTOBER 10, 2024
© CJ ARCHITECTS LLC

UNIT PLAN

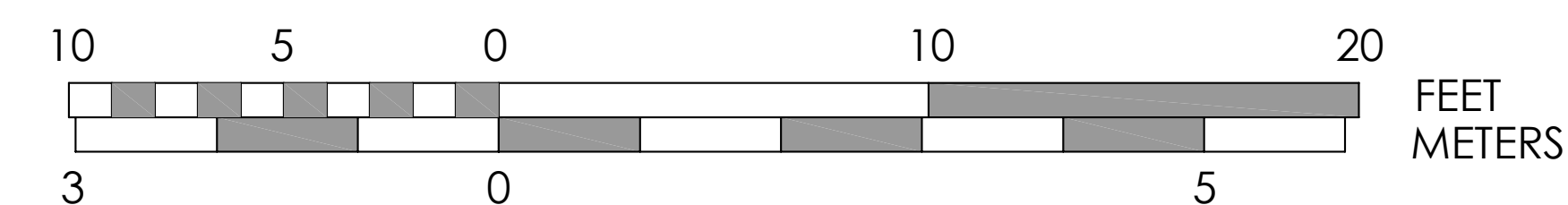
70 MAPLEWOOD AVENUE
PORTSMOUTH, NEW HAMPSHIRE



NOTE: DIMENSIONS AND AREAS PROVIDED ARE PRELIMINARY AND ARE SUBJECT TO CHANGE DURING DESIGN DEVELOPMENT AND CONSTRUCTION. AS-BUILT CONDITIONS HAVE NOT BEEN VERIFIED.



UNIT KEY PLAN



301

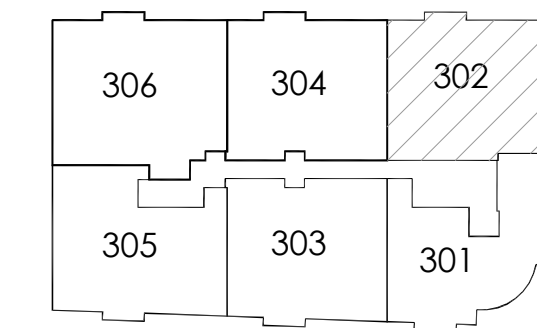
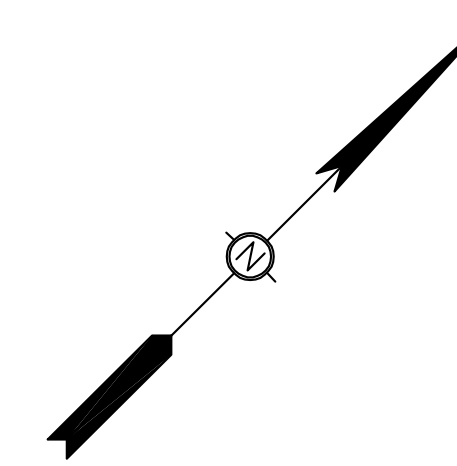
OCTOBER 10, 2024
© CJ ARCHITECTS LLC

UNIT PLAN

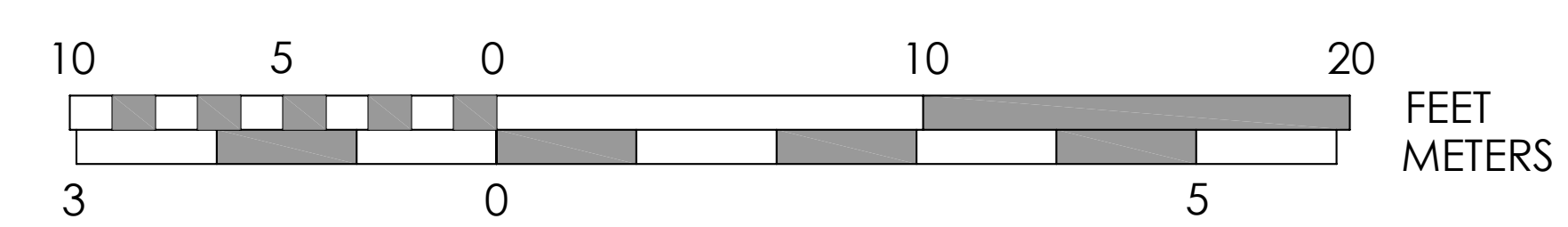
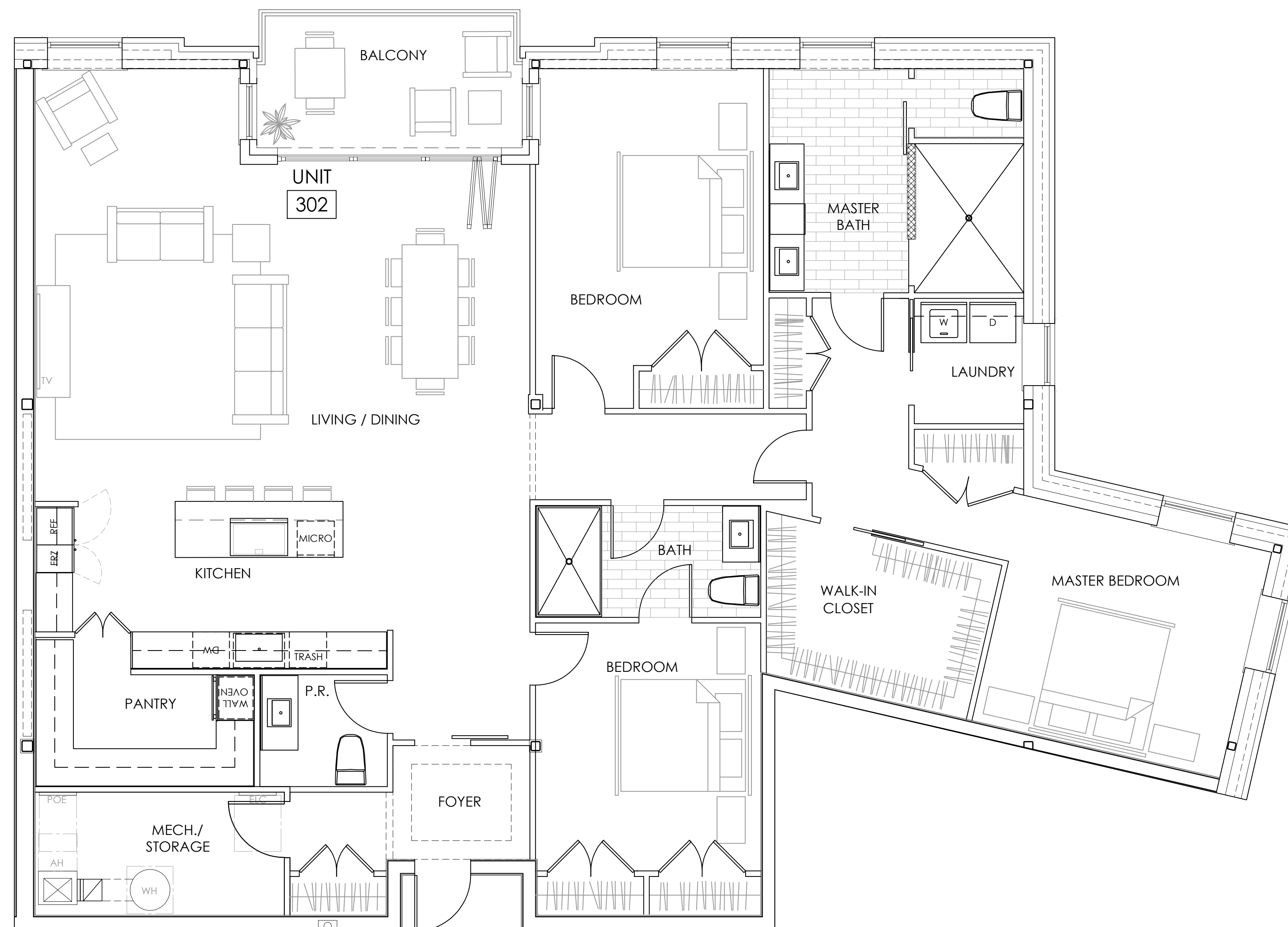
70 MAPLEWOOD AVENUE
PORTSMOUTH, NEW HAMPSHIRE



NOTE: DIMENSIONS AND AREAS PROVIDED ARE PRELIMINARY AND ARE SUBJECT TO CHANGE DURING DESIGN DEVELOPMENT AND CONSTRUCTION. AS-BUILT CONDITIONS HAVE NOT BEEN VERIFIED.



UNIT KEY PLAN



302

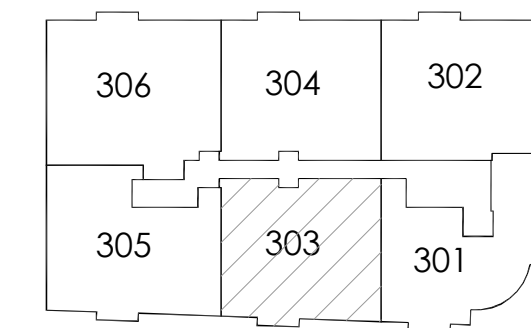
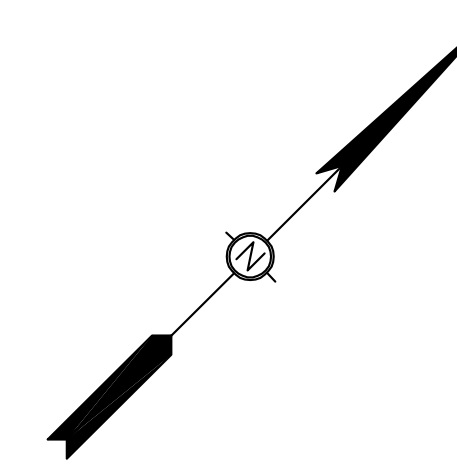
OCTOBER 10, 2024
© CJ ARCHITECTS LLC

UNIT PLAN

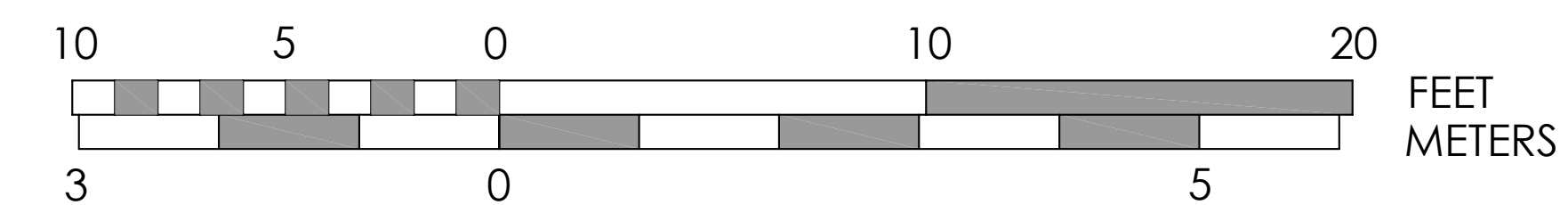
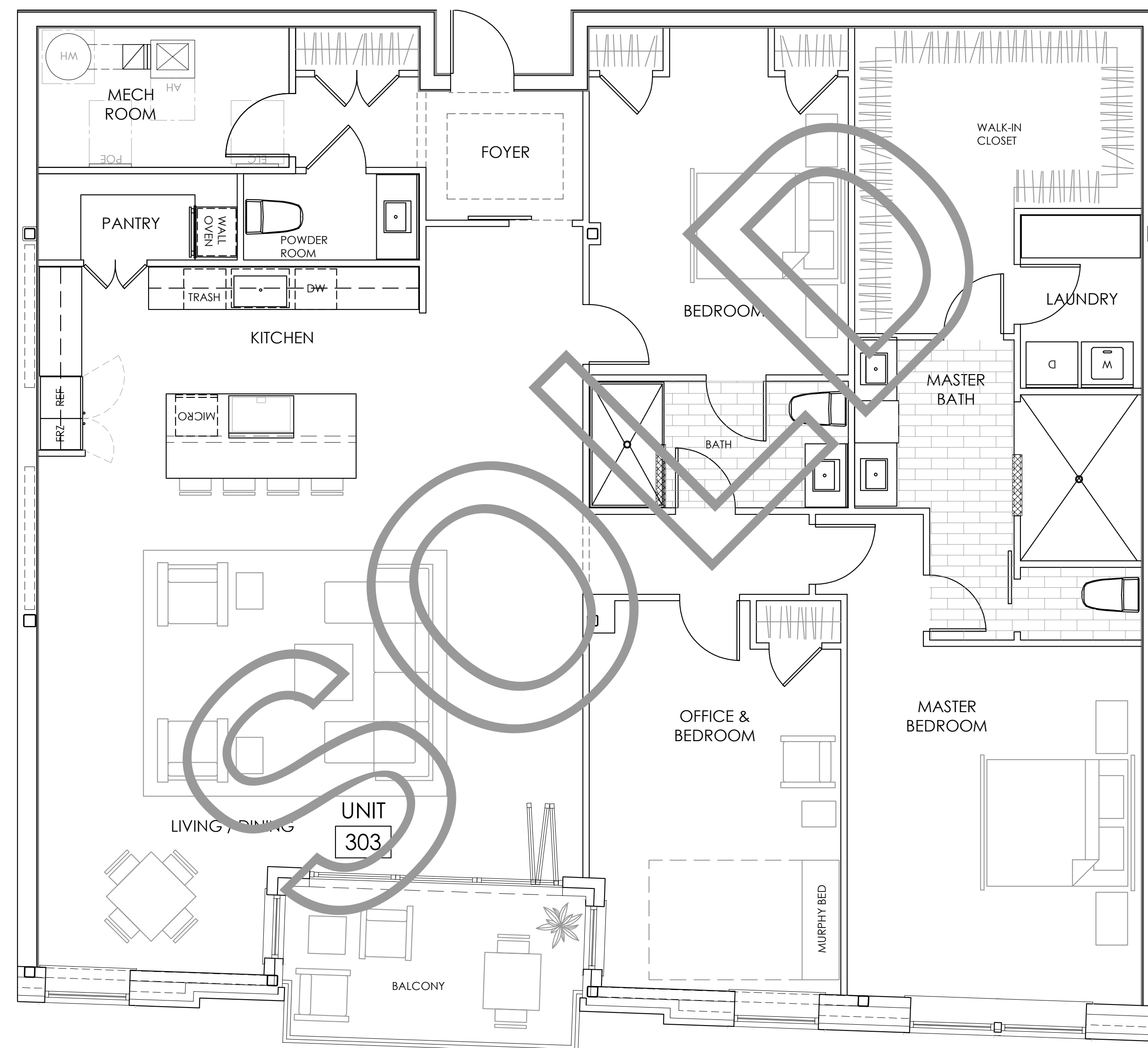
70 MAPLEWOOD AVENUE
PORTSMOUTH, NEW HAMPSHIRE



NOTE: DIMENSIONS AND AREAS PROVIDED ARE PRELIMINARY AND ARE SUBJECT TO CHANGE DURING DESIGN DEVELOPMENT AND CONSTRUCTION. AS-BUILT CONDITIONS HAVE NOT BEEN VERIFIED.



UNIT KEY PLAN



303

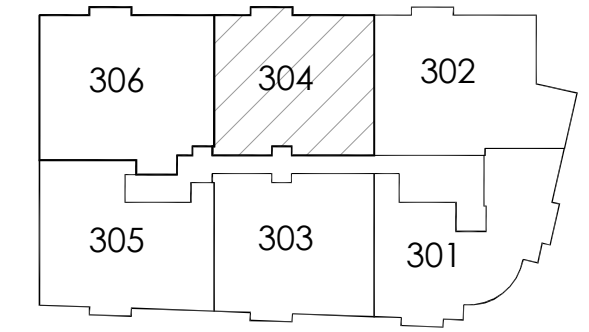
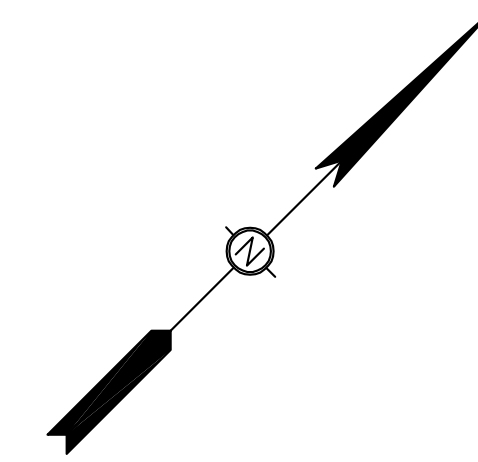
OCTOBER 10, 2024
© CJ ARCHITECTS LLC

UNIT PLAN

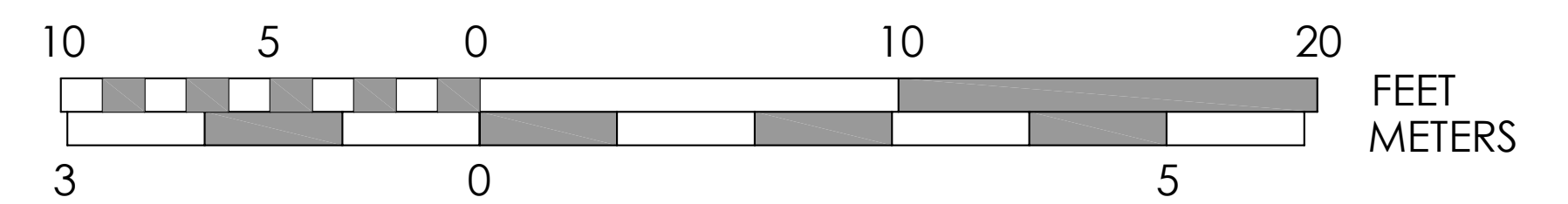
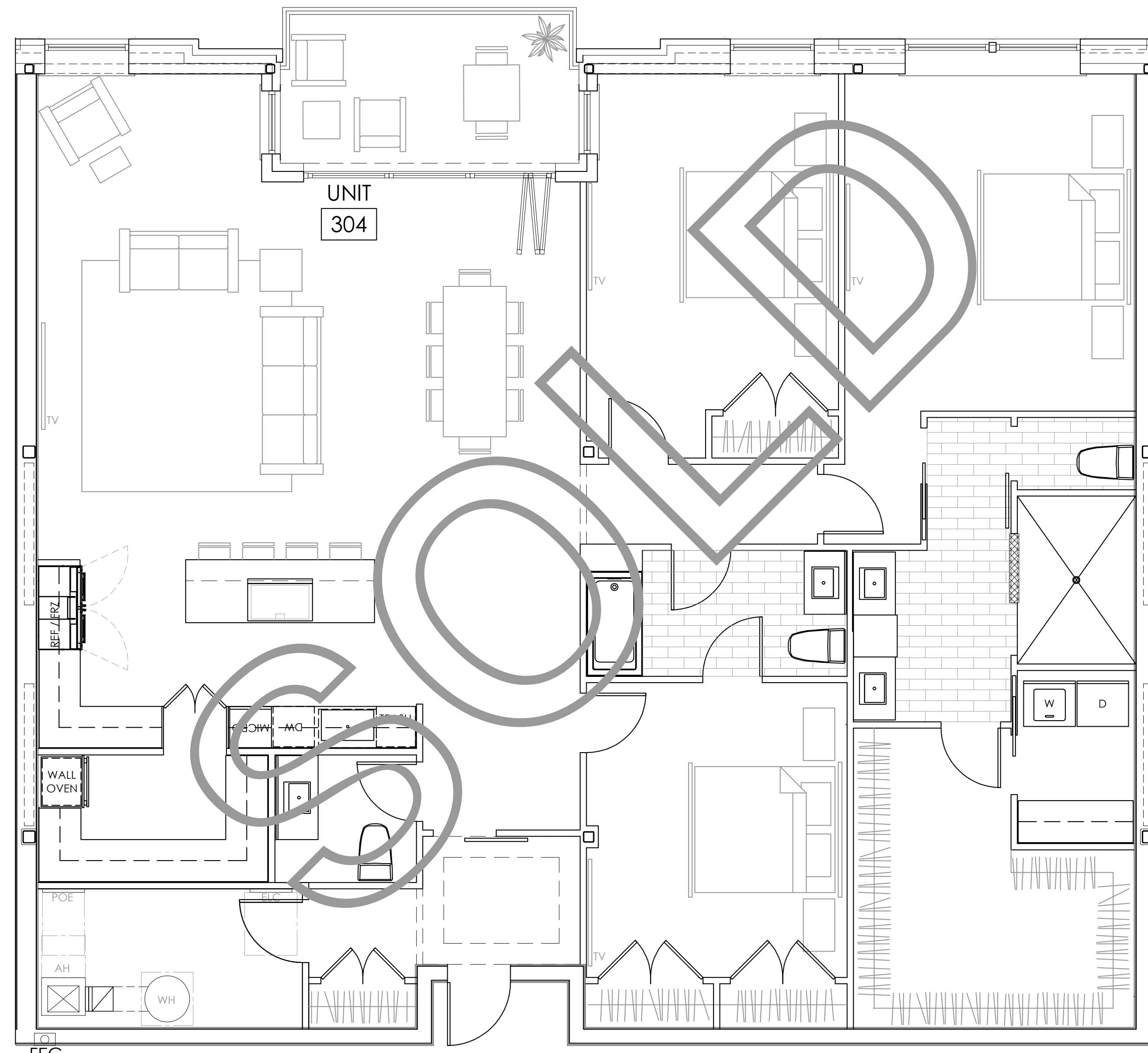
70 MAPLEWOOD AVENUE
PORTSMOUTH, NEW HAMPSHIRE



NOTE: DIMENSIONS AND AREAS PROVIDED ARE PRELIMINARY AND ARE SUBJECT TO CHANGE DURING DESIGN DEVELOPMENT AND CONSTRUCTION. AS-BUILT CONDITIONS HAVE NOT BEEN VERIFIED.



UNIT KEY PLAN



304

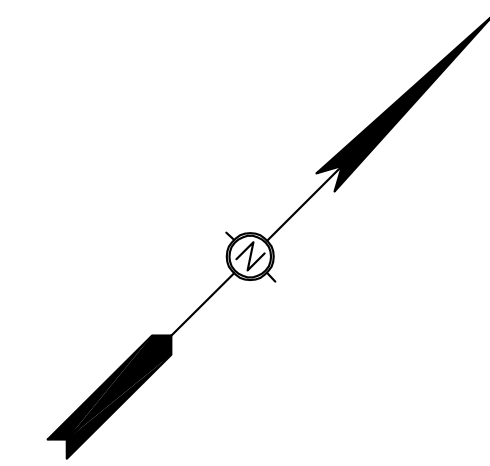
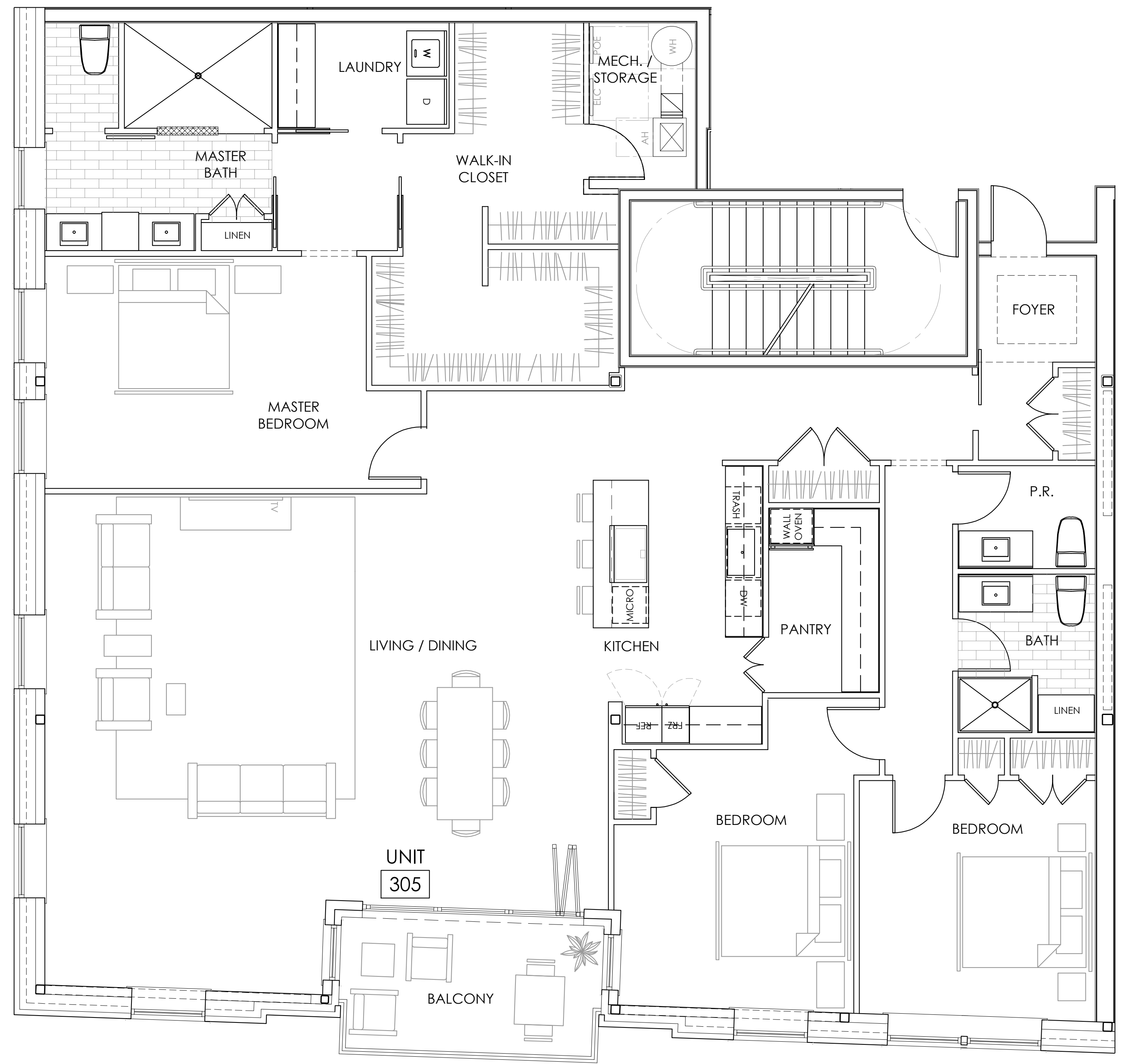
OCTOBER 10, 2024
© CJ ARCHITECTS LLC

UNIT PLAN

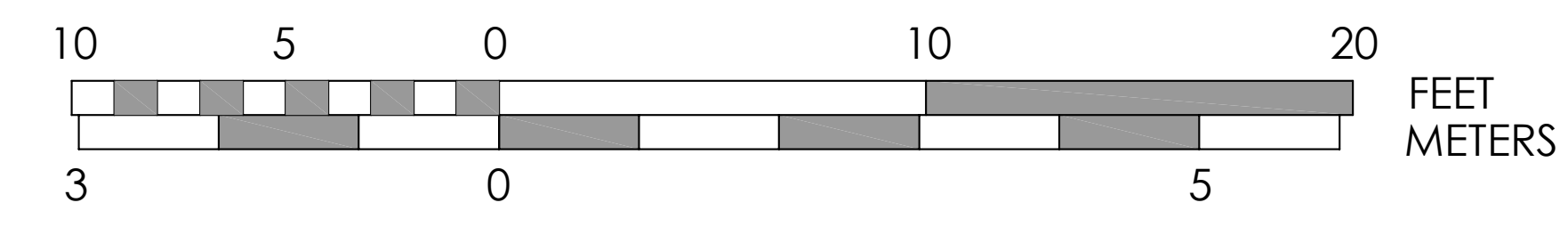
70 MAPLEWOOD AVENUE
PORTSMOUTH, NEW HAMPSHIRE



NOTE: DIMENSIONS AND AREAS PROVIDED ARE PRELIMINARY AND ARE SUBJECT TO CHANGE DURING DESIGN DEVELOPMENT AND CONSTRUCTION. AS-BUILT CONDITIONS HAVE NOT BEEN VERIFIED.



UNIT KEY PLAN



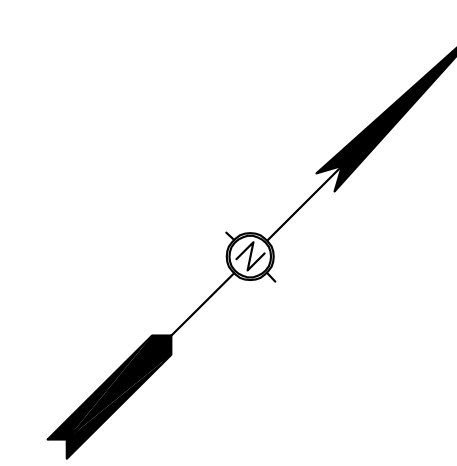
305 OCTOBER 10, 2024
© CJ ARCHITECTS LLC

UNIT PLAN

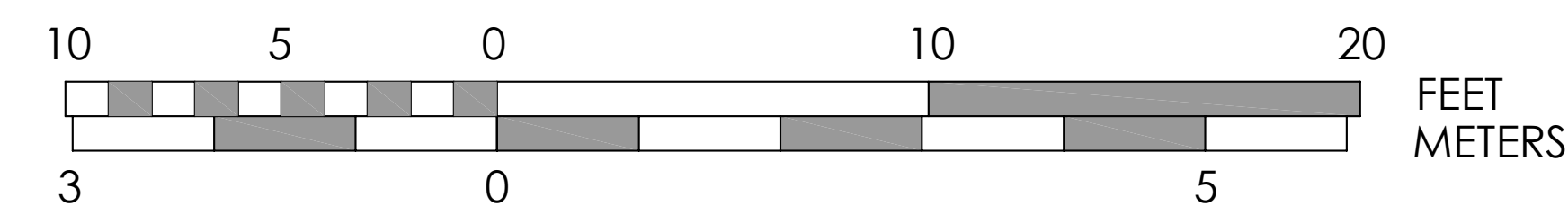
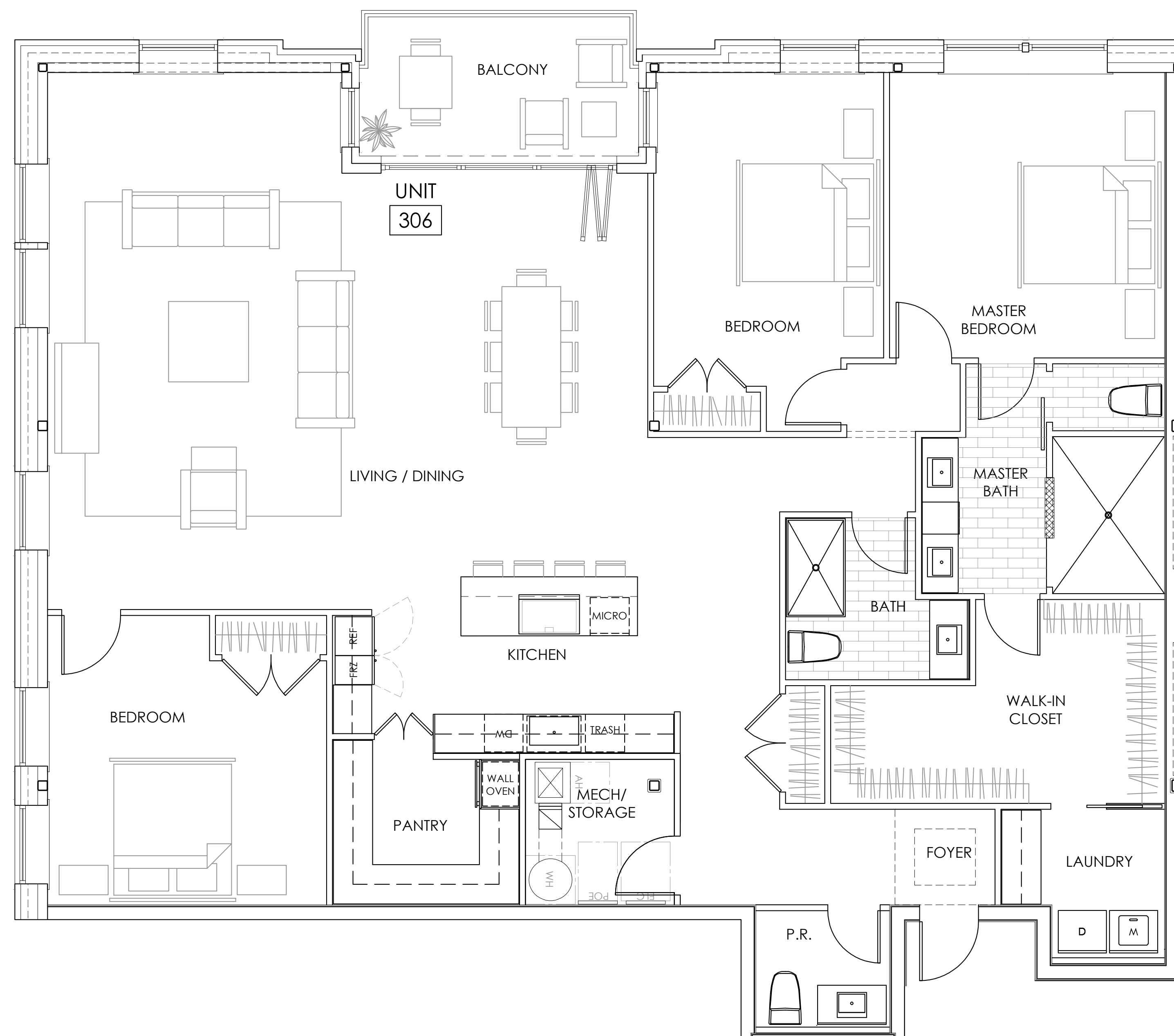
70 MAPLEWOOD AVENUE
PORTSMOUTH, NEW HAMPSHIRE



NOTE: DIMENSIONS AND AREAS PROVIDED ARE PRELIMINARY AND ARE SUBJECT TO CHANGE DURING DESIGN DEVELOPMENT AND CONSTRUCTION. AS-BUILT CONDITIONS HAVE NOT BEEN VERIFIED.



UNIT KEY PLAN



306

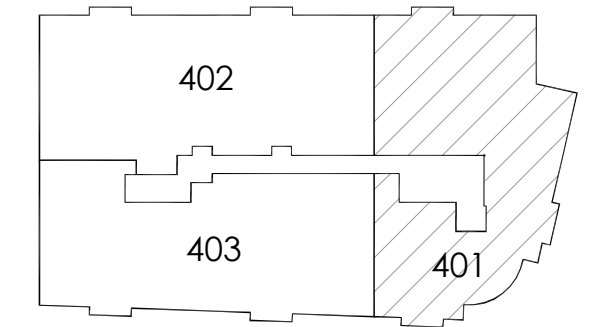
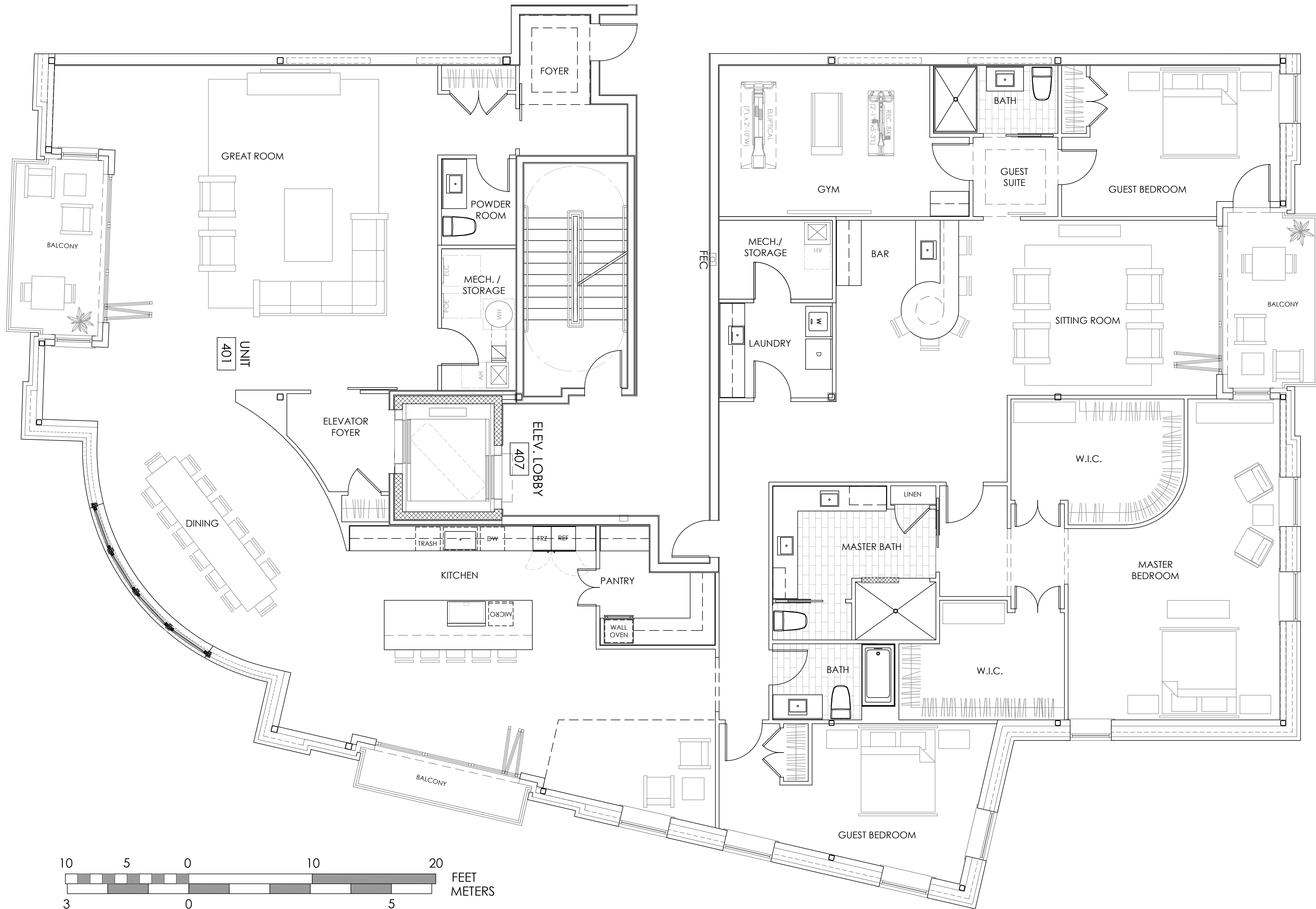
OCTOBER 10, 2024
© CJ ARCHITECTS LLC

UNIT PLAN

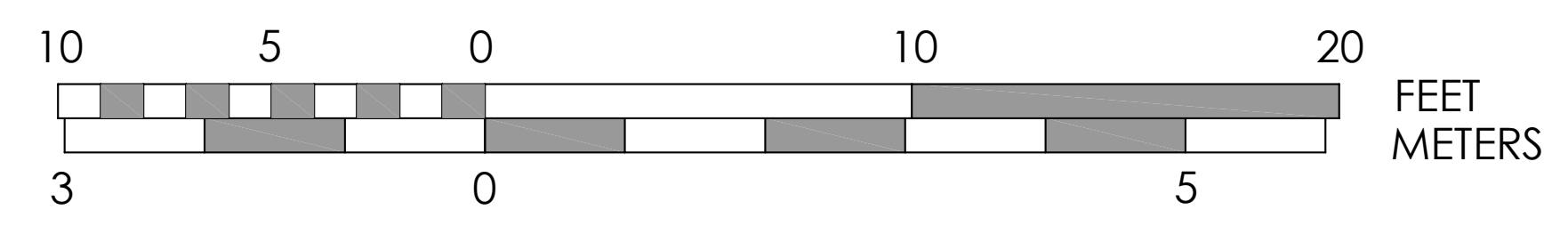
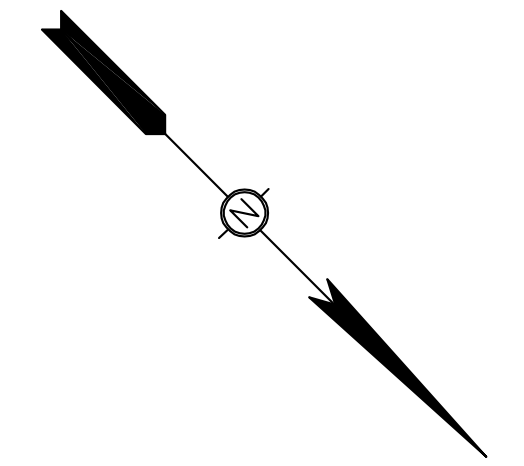
70 MAPLEWOOD AVENUE
PORTSMOUTH, NEW HAMPSHIRE



NOTE: DIMENSIONS AND AREAS PROVIDED ARE PRELIMINARY AND ARE SUBJECT TO CHANGE DURING DESIGN DEVELOPMENT AND CONSTRUCTION. AS-BUILT CONDITIONS HAVE NOT BEEN VERIFIED.



UNIT KEY PLAN



401

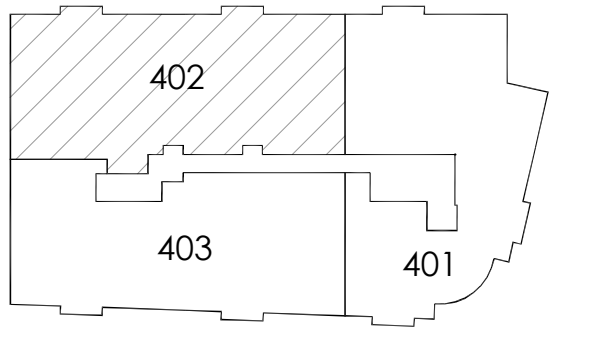
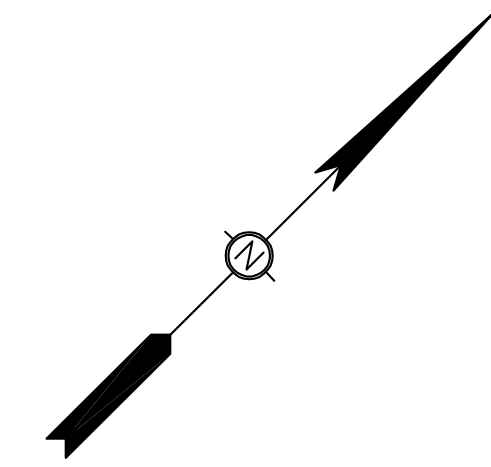
OCTOBER 10, 2024
© CJ ARCHITECTS LLC

UNIT PLAN

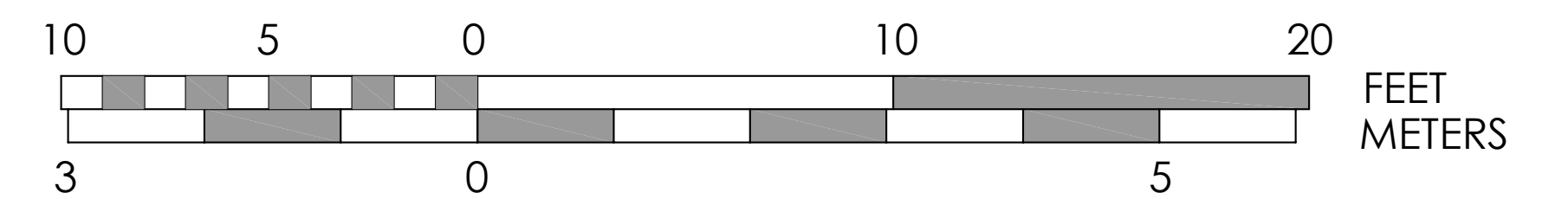
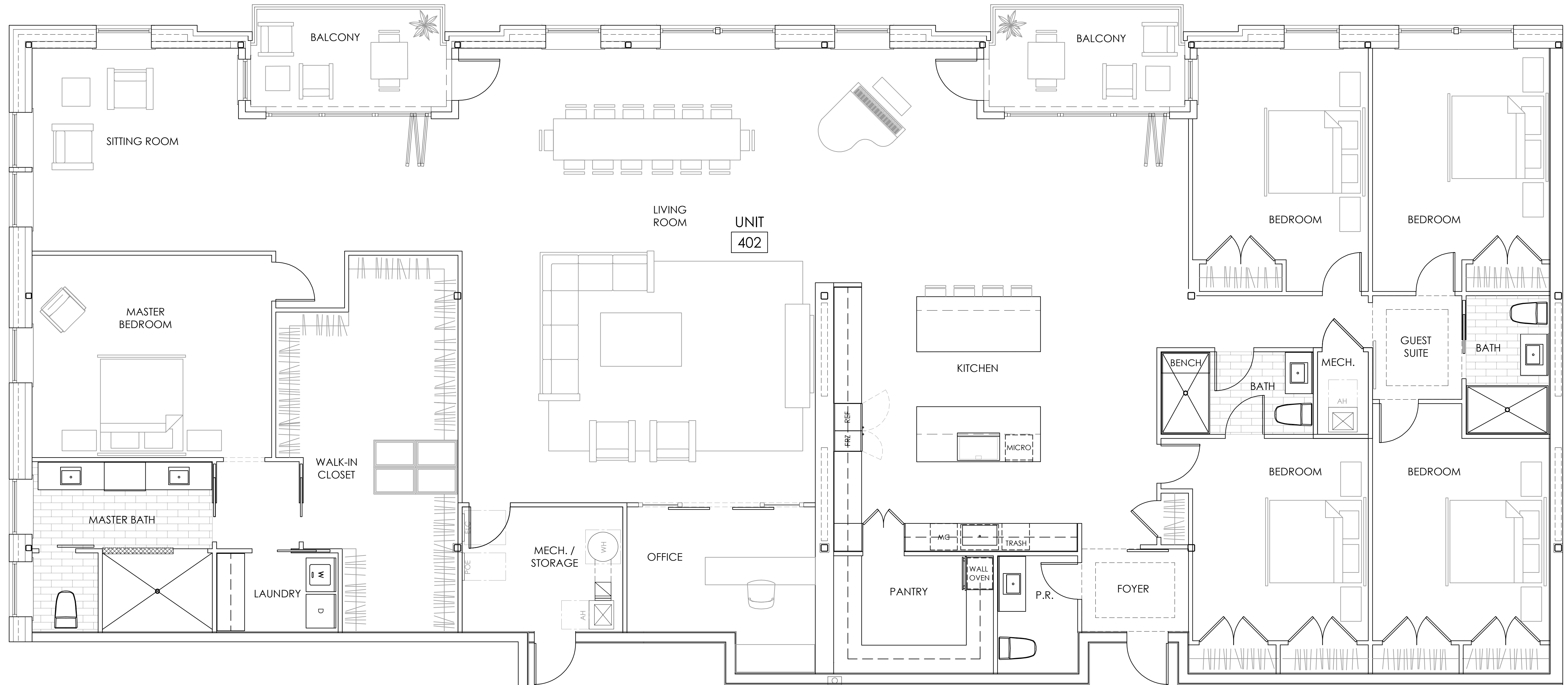
70 MAPLEWOOD AVENUE
PORTSMOUTH, NEW HAMPSHIRE



NOTE: DIMENSIONS AND AREAS PROVIDED ARE PRELIMINARY AND ARE SUBJECT TO CHANGE DURING DESIGN DEVELOPMENT AND CONSTRUCTION. AS-BUILT CONDITIONS HAVE NOT BEEN VERIFIED.



UNIT KEY PLAN



402

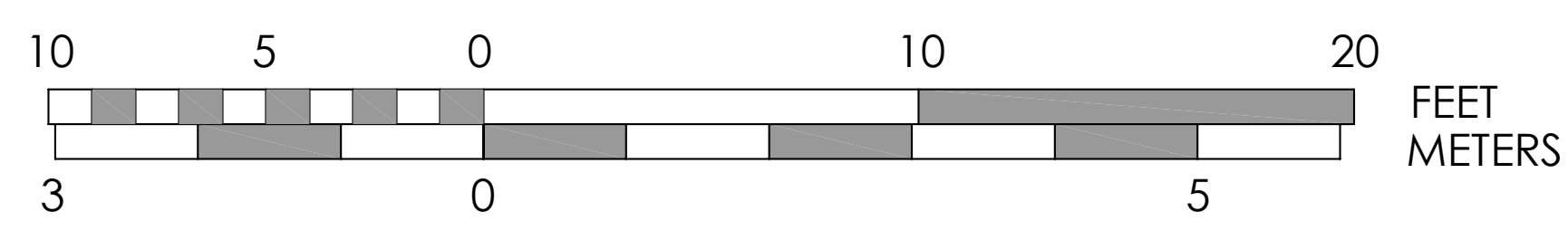
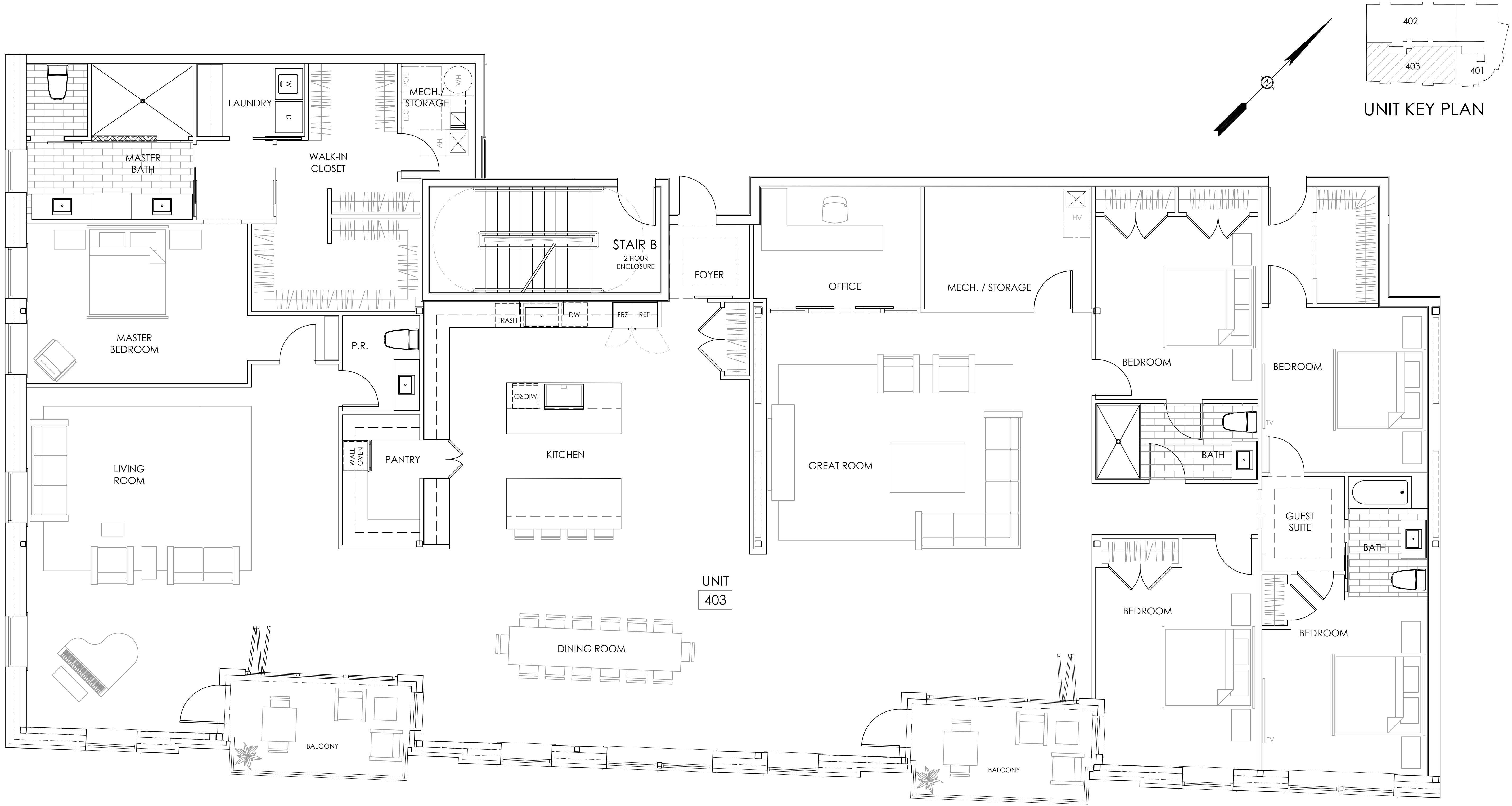
OCTOBER 10, 2024
© CJ ARCHITECTS LLC

UNIT PLAN

70 MAPLEWOOD AVENUE
PORTSMOUTH, NEW HAMPSHIRE



NOTE: DIMENSIONS AND AREAS PROVIDED ARE PRELIMINARY AND ARE SUBJECT TO CHANGE DURING DESIGN DEVELOPMENT AND CONSTRUCTION. AS-BUILT CONDITIONS HAVE NOT BEEN VERIFIED.



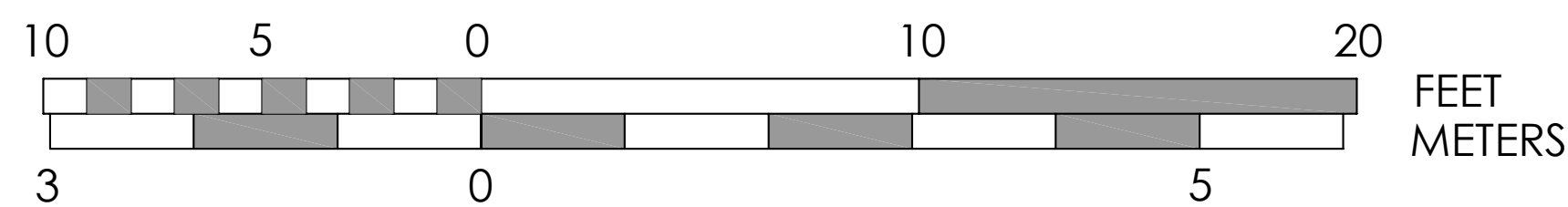
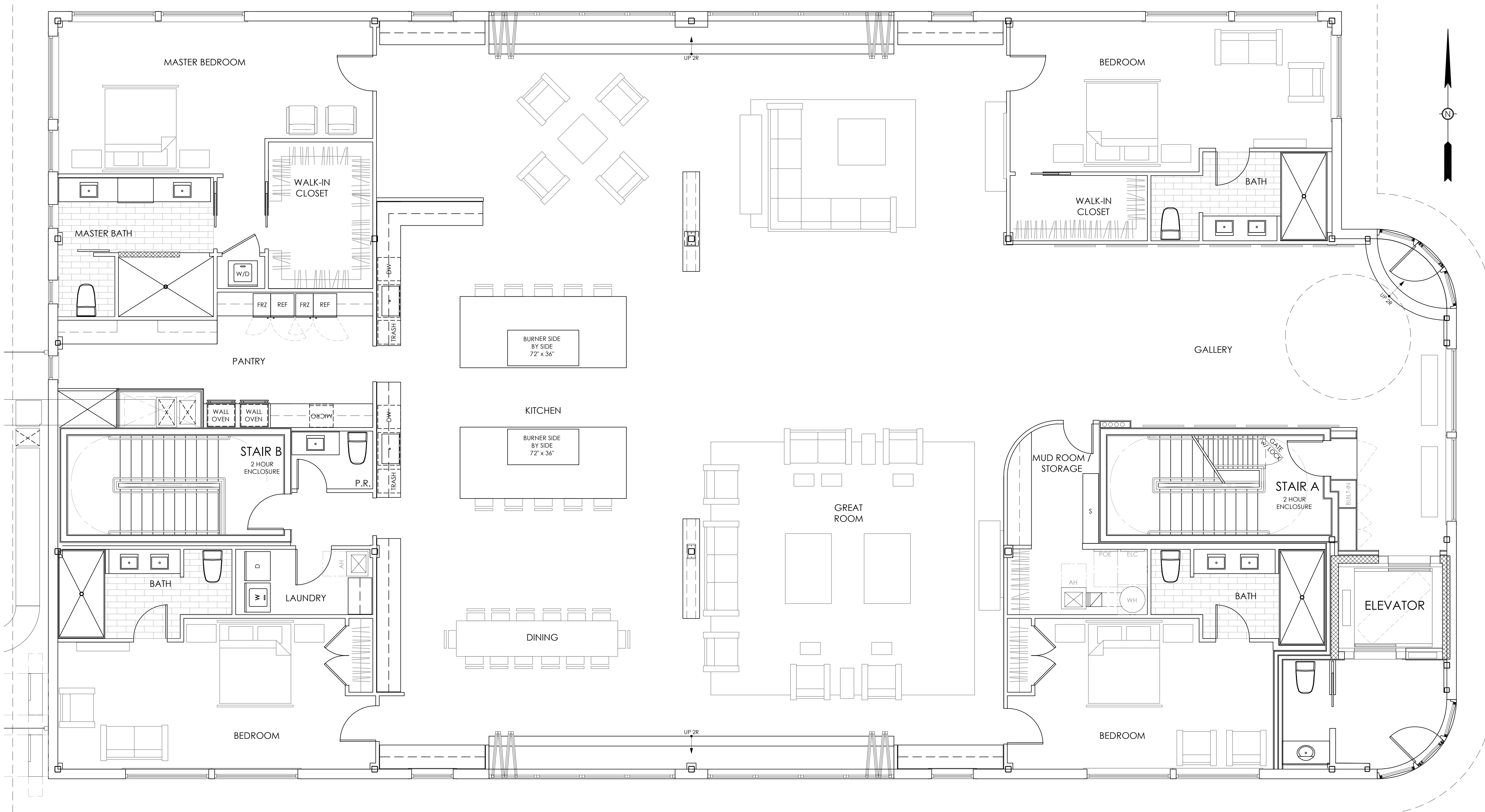
403 OCTOBER 10, 2024
© CJ ARCHITECTS LLC

UNIT PLAN

70 MAPLEWOOD AVENUE
PORTSMOUTH, NEW HAMPSHIRE



NOTE: DIMENSIONS AND AREAS PROVIDED ARE PRELIMINARY AND ARE SUBJECT TO CHANGE DURING DESIGN DEVELOPMENT AND CONSTRUCTION. AS-BUILT CONDITIONS HAVE NOT BEEN VERIFIED.



501

OCTOBER 10, 2024
© CJ ARCHITECTS LLC

UNIT PLAN

70 MAPLEWOOD AVENUE
PORTSMOUTH, NEW HAMPSHIRE



NOTE: DIMENSIONS AND AREAS PROVIDED ARE PRELIMINARY AND ARE SUBJECT TO CHANGE DURING DESIGN DEVELOPMENT AND CONSTRUCTION. AS-BUILT CONDITIONS HAVE NOT BEEN VERIFIED.